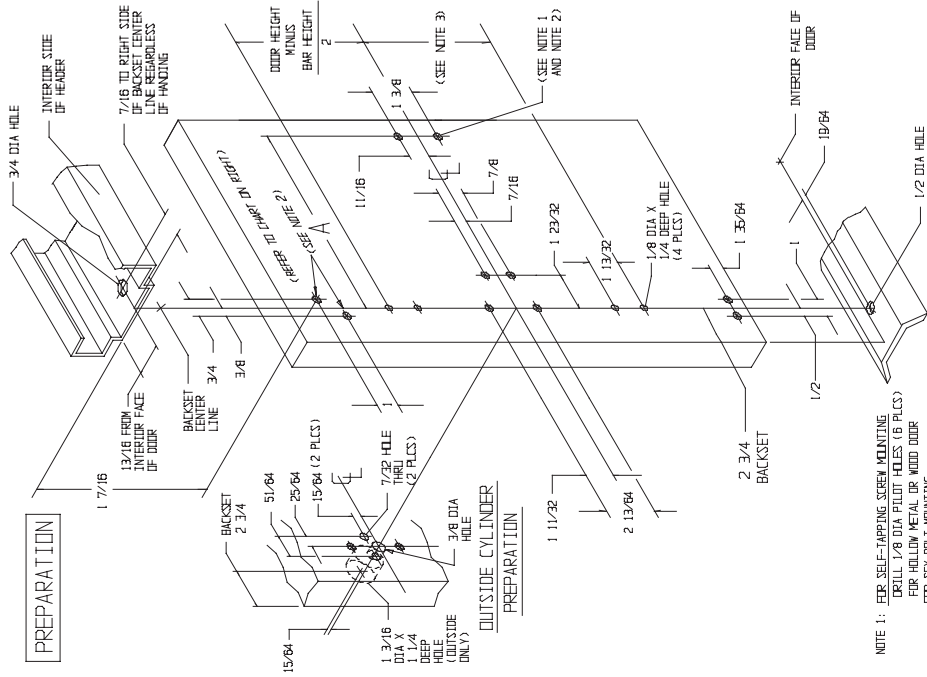


PREPARATION



NOTE 1: FOR SELF-TAPPING SCREW MOUNTING DRILL 1/8 DIA PILOT HOLES (6 PLCS) FOR HOLLOW METAL OR WOOD DOOR FOR SELF-BOLT MOUNTING

REFER TO NOTE 2 FOR DRILL HOLE SIZES

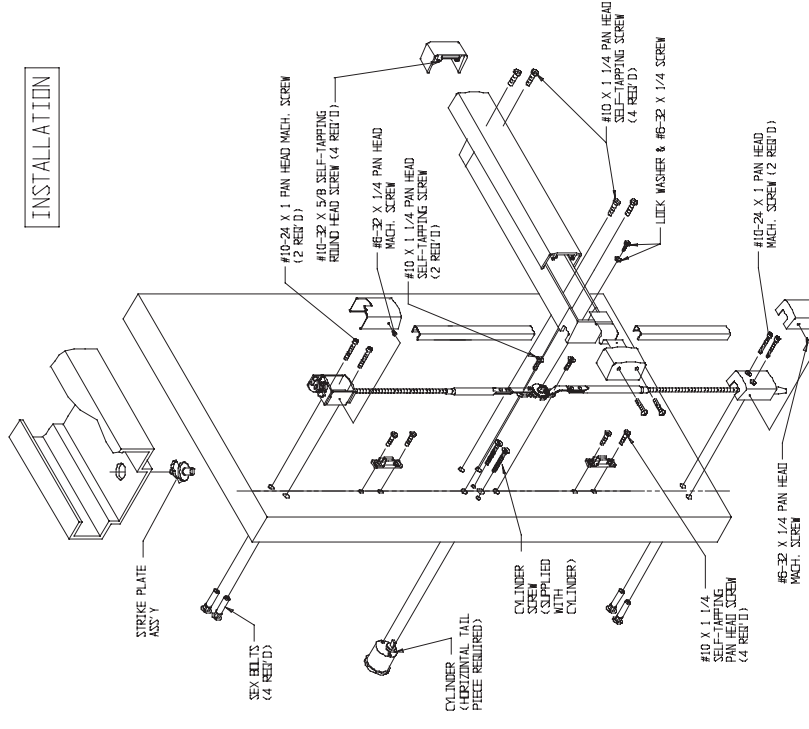
NOTE 2: UNLESS OTHERWISE SPECIFIED, 4 HOLES (Ø) ON OUTSIDE OF DOOR ARE 3/8 INCH DIAMETER AND INSIDE OF DOOR 7/32 INCH DIAMETER FOR HOLLOW METAL DOOR, 3/8 INCH DIAMETER THRU FOR WOOD DOOR

NOTE 3: WHEN BAR HEIGHT IS 36" OR MORE, DIVIDE BAR HEIGHT BY 2. OTHERWISE, USE 18" AS THE DIMENSION

NOTE: THESE DIMENSIONS AND TEMPLATES ASSUME A DOOR THICKNESS OF 1 3/4". FOR DOORS OF OTHER THICKNESS, CONSULT FACTORY.

OUTSIDE CYLINDER PREPARATION

INSTALLATION

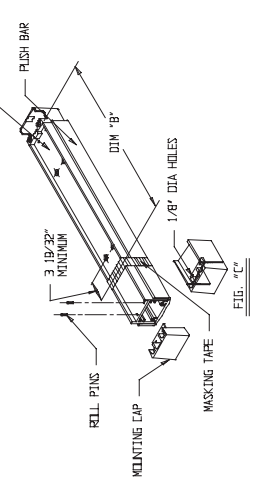


INCHES		METRIC		EQUIVALENTS	
INCHES	MM	INCHES	MM	INCHES	MM
1/8	3.17	7/16	11.11	7/8	22.22
3/16	4.75	29/64	11.35	1	25.40
7/32	5.54	1/2	12.70	1 3/16	30.14
1/4	6.35	49/64	17.07	1 1/4	31.75
9/32	7.14	11/16	17.45	1 3/8	34.93
19/64	7.54	3/4	19.05	1 1/2	38.10
3/8	9.52	51/64	20.32	1 5/8	41.27
25/64	10.16	13/16	20.62	1 7/8	44.45
				2	50.80
				2 1/4	60.33
				2 1/2	63.50
				2 3/4	68.27
				3	76.20
				3 1/4	85.75
				3 1/2	89.17
				3 3/4	94.48
				4	101.60
				4 1/4	111.75
				4 1/2	114.30
				4 3/4	119.48
				5	127.00
				5 1/4	138.13
				5 1/2	141.27
				5 3/4	146.05
				6	152.40
				6 1/4	162.71
				6 1/2	165.10
				6 3/4	171.45
				7	177.80
				7 1/4	187.80
				7 1/2	191.50
				7 3/4	196.80
				8	203.20
				8 1/4	213.66
				8 1/2	216.13
				8 3/4	221.43
				9	228.60
				9 1/4	238.13
				9 1/2	241.30
				9 3/4	246.75
				10	254.00

DIM	DOOR OPENING WIDTH			
	30"	36"	42"	48"
A	24 1/4	30 1/4	36 1/4	42 1/4

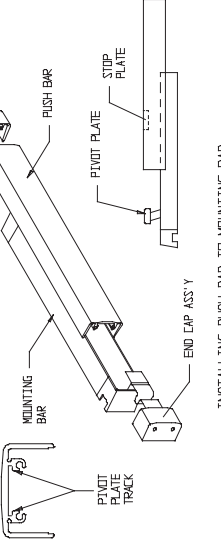
CUT-OFF INSTRUCTIONS FOR NON-STANDARD DOORS

1. DRIVE OUT TWO ROLL PINS.
2. REMOVE MOUNTING CAP.
3. COLLAPSE BAR AND TAPE DOWN IN THE AREA OF CUT-OFF.
4. INTERFERE WITH THE DOOR FROM THE INSIDE BY TIGHTENING THE LOCKING SCREW TO THE MINIMUM EXTENSION FROM HINGET CENTER LINE TO NEW CUT-OFF LENGTH AS SHOWN.
5. MEASURE MOUNTING BAR (NOT PUSH BAR) AND MARK EXTRUSION LENGTH ON TAPE.
6. SAW OFF EXCESS LENGTH. REMOVE TAPE AND DEBURR.
7. LAY MOUNTING CAP OVER MOUNTING BAR (FIG. 7C), AND USE AS A GUIDE TO DRILL TWO 1/8" DIA HOLES.
8. RE-INSTALL MOUNTING CAP INTO MOUNTING BAR AND DRIVE TWO ROLL PINS INTO HOLES.



SEPARATING PUSH BAR AND MOUNTING BAR PROCEDURE

1. REMOVE BOTH END CAPS. THE RETAINER IS ATTACHED TO THE INSIDE END CAP.
2. SLIDE PUSH BAR TOWARD HINGE SIDE OF DOOR.
3. CONTINUE TO SLIDE PUSH BAR PAST THE PIVOT PLATE THAT RIDES IN PUSH BAR TRACK.
4. SLIDE PUSH BAR IN OPPOSITE DIRECTION KEEPING PIVOT PLATE OUT OF TRACK UNTIL PUSH BAR IS FREE OF MOUNTING BAR.

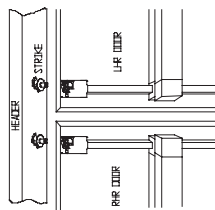


ADAMS RITE MANUFACTURING COMPANY
CITY OF INDUSTRY, CALIF. 91749

3100 FIRE RATED EXIT DEVICE
WOOD OR HOLLOW METAL DOOR
WITH HOLLOW METAL FRAME

INSTALLATION INSTRUCTION CHECKLIST

ADAMS RITE
SERIES 3100
EXIT
DEVICE

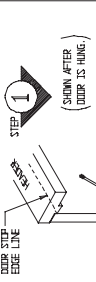
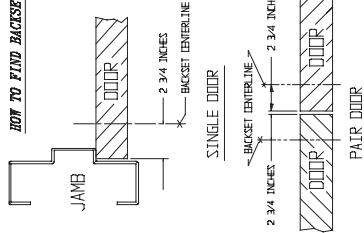


IMPORTANT!!

This device is unanodized. It can be installed in doors with anodized or bright metal surfaces. To ensure proper operation, the lockset and heater are pre-anodized on one identical set in mirror image to the other. Select doors that have the same anodizing process as the strike plate. The strike plate and the strike post is toward the right of the backset center-line for both doors.

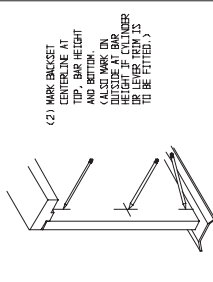
NOTE STEPS 2 THROUGH 8 ARE MORE EASILY ACCOMPLISHED IF DOOR IS NOT INSTALLED IN FRAME.

HOW TO FIND BACKSET

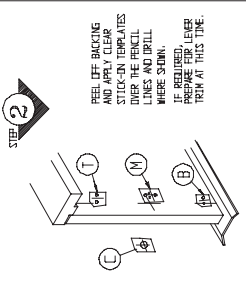


STEP 1
(SHOWN AFTER DOOR IS HUNG.)

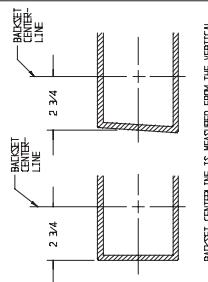
(1) MARK BAR HEIGHT ON INSIDE OF DOOR. IF CYLINDER WILL NOT FIT, MARK DOOR TOP EDGE LINE.



(2) MARK BACKSET CENTERLINE AT TOP, BAR HEIGHT (ALSO MARK ON INSIDE OF DOOR). (ALSO MARK ON OUTSIDE AT BAR CENTER AND LEVER DOWN AS TO BE FITTED.)



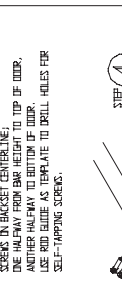
STEP 3
PEEL OFF BACKING AND APPLY CLEAR STRIP ON TEMPLATES. MARK ALL LINES AND DRILL WHERE SHOWN. IF REQUIRED, PREPARE FOR LEVER TRIM AT THIS TIME.



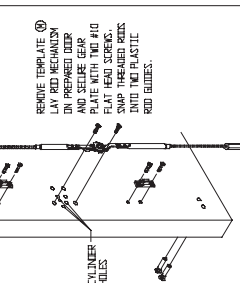
STEP 4
SEPARATE PUSH BAR FROM MOUNTING BAR AS SHOWN ON REVERSE OF THIS SHEET. TEMPORARILY IN-LEVEL POSITION AND MARK HOLE SIZE PER MOUNTING HOLES. REMOVE BAR, DRILL AND REINSTALL MOUNTING BAR PERMANENTLY WITH SCREWS AS SHOWN AT NEXT COLUMN.



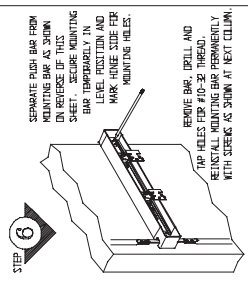
STEP 5
INSTALL SIX BOLTS THROUGH 3/8" DIA HOLES. DRILL 3/8" DIA HOLES USING TWO #10 SELF-TAPPING SCREWS THROUGH DOOR. USE RED BOLT AS TEMPLATE TO DRILL HOLES PER SELF-TAPPING SCREWS.



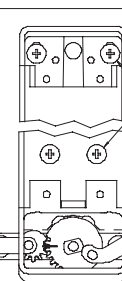
STEP 6
IF CYLINDER OR LEVER TRIM IS REQUIRED, PREPARE FOR LEVER TRIM AS SHOWN THROUGH DOOR. REMOVE TEMPLATE (4) LAY RED MECHANISM PLATE WITH TWO #10 AND MARK SCREW HOLES. SWAP THREADED RODS INTO THE PLASTIC ROD GUIDES.



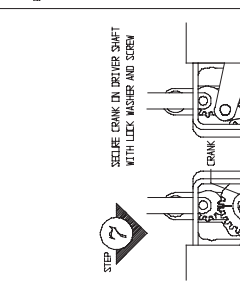
STEP 7
ADJUST BUSH TO LENGTH. INSERT END IN MOUNTING BASE AND CUT AS SHOWN ON TEMPLATES (5) AND (6). REINSTALL PUSH BAR AS SHOWN ON REVERSE OF THIS SHEET.



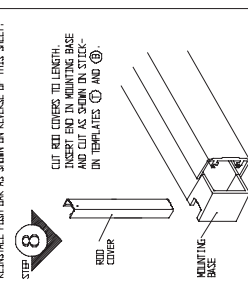
STEP 9
REMOVE HEX SCREW FROM SQUARE BELT. SLIDE THE ACTUATOR ASSEMBLY INTO THE SQUARE BELT AND SECURE ACTUATOR ASSEMBLY WITH TWO 10-32 X 1/4" HEX SCREWS. WITH ASSEMBLY IN LEVERED POSITION AND PUSH BAR RELEASED, END OF SQUARE BELT SHOULD ENGAGE STOP PLATE AS SHOWN. BELT IS NOT FLUSH WITH TOP OF STOP PLATE. WHEN THE BELT NEEDS TO BE RE-ADJUSTED AS FOLLOWS: -TURN THE ACTUATOR ASSEMBLY. -TURN THE SQUARE BELT UP OR DOWN AS NECESSARY. -REINSTALL ACTUATOR ASSEMBLY.



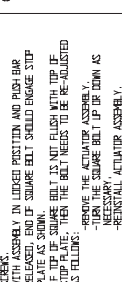
STEP 10
IMPORTANT: SQUARE BELT MUST BE FLUSH WITH TOP OF PLATE.



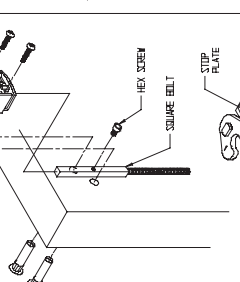
STEP 11
IMPORTANT: REINSTALL HEX SCREW (LINE SQUARE) MAKE SURE THAT HEX SCREW POINTS OUTWARD AS SHOWN.



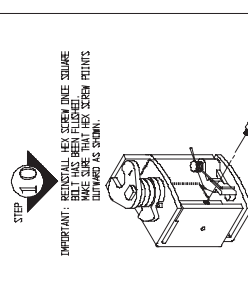
STEP 13
HOLD DOOR THEN, PUSH BAR. ADJUST BOTTOM BOLT SO IT CLEANS THRESHOLD BY 1/8" AS DOOR CLOSES.



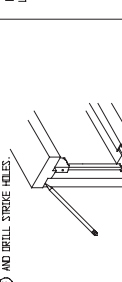
STEP 14
HOLD DOOR THEN, PUSH BAR. ADJUST BOTTOM BOLT SO IT CLEANS THRESHOLD BY 1/8" AS DOOR CLOSES.



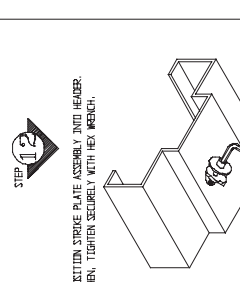
STEP 15
HOLD DOOR THEN, PUSH BAR. ADJUST BOTTOM BOLT SO IT CLEANS THRESHOLD BY 1/8" AS DOOR CLOSES.



STEP 17
INSTALL LOWER COVER. SWAP ROD COVER INTO PLASTIC ROD GUIDE AND SLIDE IT UP INTO MOUNTING BASE. SLIP LOWER BELT GUIDE ASSEMBLY OVER HEX BELT AND DEEP INTO LOWER COVER SHOWN. POSITION LOWER COVER AND SECURE IT WITH TWO SCREWS.



STEP 18
INSTALL TWO PROTECTIVE COVERS ON TOP BELT ACTUATOR ASSEMBLY AND LOWER COVER. SLIDE PROTECTIVE COVERS INTO TOP BELT ACTUATOR ASSEMBLY AND LOWER COVER. AND SECURE EACH COVER WITH ONE #8 SCREW AT SIDE.



STEP 19
INSTALL PUSH BAR END CAPS. 10-32 X 5/8 SELF-TAPPING SCREW.

