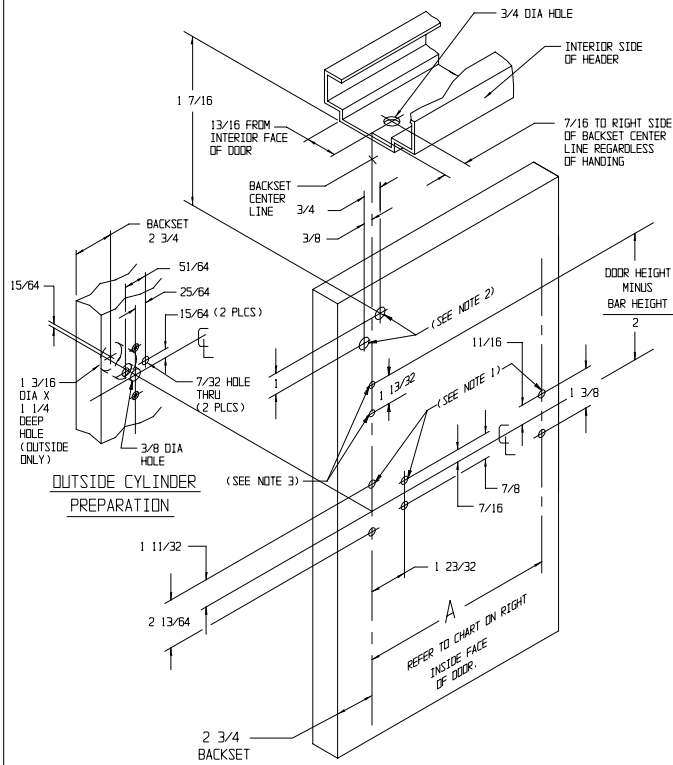


**PREPARATION**



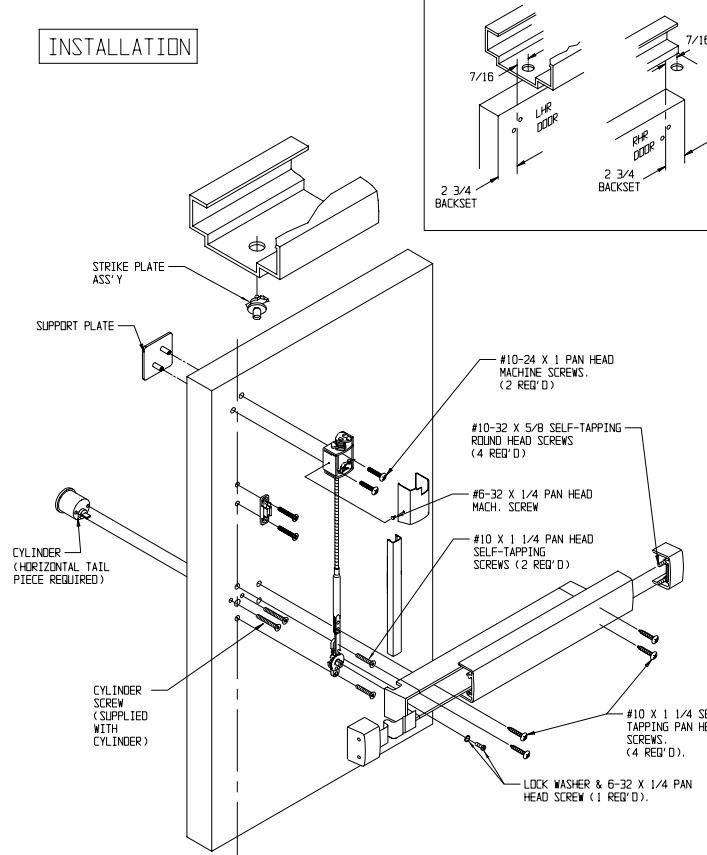
NOTE 1: FOR SELF-TAPPING SCREW: DRILL 1/8" DIA HOLE (6 PLCS) FOR SEX BOLTS: REFER TO NOTE 2 FOR DRILL HOLE SIZES

NOTE 2: DRILL 3/8" DIA THRU DOOR (2 PLCS)

NOTE 3: DRILL 1/8" DIA HOLE (2 PLCS)

NOTE: THESE DIMENSIONS AND TEMPLATES ASSUME A DOOR THICKNESS OF 1 3/4". FOR DOORS OF OTHER THICKNESS, CONSULT FACTORY.

**INSTALLATION**

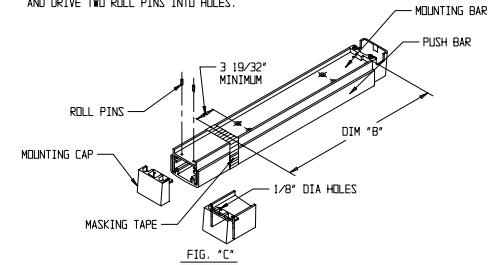


METRIC EQUIVALENTS									
INCHES	MM	INCHES	MM	INCHES	MM	INCHES	MM	INCHES	MM
1/8	3.17	7/16	11.11	7/8	22.22	1 35/64	39.27	3/8	91.40
3/16	4.75	29/64	11.56	1	25.40	1 23/32	43.64	3/4	92.75
7/32	5.54	1/2	12.70	1 3/16	30.14	1 3/4	44.45	42	1066.80
15/64	6.10	5/8	15.86	1 1/4	31.75	2 13/64	55.88	42 1/4	1073.15
1/4	6.35	43/64	17.07	1 11/32	34.29	3 19/32	91.26	48	1219.20
9/32	7.14	11/16	17.45	1 3/8	34.93	18	457.20		
19/64	7.54	3/4	19.05	1 13/32	35.56	24 1/4	615.95		
3/8	9.52	51/64	20.32	1 27/64	36.09	30	762.00		
25/64	10.16	13/16	20.82	1 1/2	38.10	30 1/4	768.35		

		DOOR OPENING WIDTH			
DIM	A	30"	36"	42"	48"
		24 1/4	30 1/4	36 1/4	42 1/4

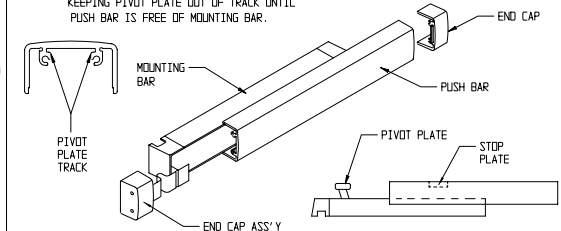
**CUT-OFF INSTRUCTIONS FOR NON-STANDARD DOORS**

1. DRIVE OUT TWO ROLL PINS.
2. REMOVE MOUNTING CAP.
3. COLLAPSE BAR AND TAPE DOWN IN THE AREA OF CUT-OFF.
4. DETERMINE EXTRUSION LENGTH ("B" DIM). (NOTE: 3 19/32" MINIMUM DIMENSION FROM RIVET CENTERLINE TO NEW CUT-OFF LENGTH AS SHOWN).
5. MEASURE MOUNTING BAR (NOT PUSH BAR), AND MARK EXTRUSION LENGTH ON TAPE.
6. SAW OFF EXCESS LENGTH. REMOVE TAPE AND DEBURR.
7. LAY MOUNTING CAP OVER MOUNTING BAR (FIG. "C"), AND USE AS A GUIDE TO DRILL TWO 1/8" DIA HOLES.
8. RE-INSTALL MOUNTING CAP INTO MOUNTING BAR AND DRIVE TWO ROLL PINS INTO HOLES.



**SEPARATING PUSH BAR AND MOUNTING BAR PROCEDURE**

1. REMOVE BOTH END CAPS. THE RETAINER IS ATTACHED TO THE NOSE END CAP.
2. SLIDE PUSH BAR TOWARD HINGE SIDE OF DOOR.
3. CONTINUE TO SLIDE PUSH BAR PAST THE PIVOT PLATE THAT RIDES IN PUSH BAR TRACK.
4. SLIDE PUSH BAR IN OPPOSITE DIRECTION KEEPING PIVOT PLATE OUT OF TRACK UNTIL PUSH BAR IS FREE OF MOUNTING BAR.



**INSTALLING PUSH BAR TO MOUNTING BAR**

1. WITH PUSH BAR IN HAND AND MOUNTING BAR ATTACHED TO DOOR, FIND STOP PLATE STAKED INTO PUSH BAR. (THIS PLATE IS ON THE LATCH END OF ASSEMBLED UNIT). SLIDE THE PIVOT PLATE NEAREST HINGE INTO TRACK OF PUSH BAR UNTIL SECOND PIVOT PLATE IS EXPOSED. INSERT PIVOT PLATE INTO TRACK ON PUSH BAR AND SLIDE IN OPPOSITE DIRECTION UNTIL PUSH BAR AND MOUNTING BAR ALIGN.

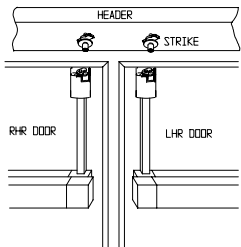


**ADAMS RITE MANUFACTURING COMPANY**  
 260 SANTA FE ST.  
 POMONA, CA 91767  
 OFFICE: (909) 632-2300 FAX: (909) 632-2369

**3100W TOP ROD ONLY  
 FIRE RATED EXIT DEVICE  
 WOOD DOOR WITH HOLLOW METAL FRAME**

# INSTALLATION INSTRUCTION CHECKLIST

ADAMS RITE **3100W** EXIT  
SERIES DEVICE



### IMPORTANT!

This device is unhanded. It can be installed in either left hand reverse or right hand reverse doors without alteration. The doors' lead stile and header preparation are IDENTICAL, not mirror image. Note in the sketch above that the yoke type bolt always faces right (as viewed from inside) and the strike post is toward the right of the backset centerline for both doors.

**NOTE** STEPS 2 THROUGH 9 ARE MORE EASILY ACCOMPLISHED IF DOOR IS NOT INSTALLED IN FRAME.

### HOW TO FIND BACKSET

