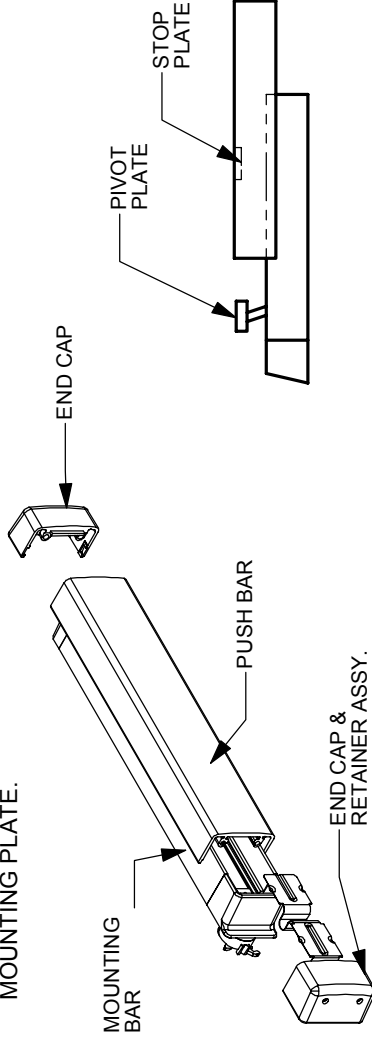


SEPARATING PUSH BAR AND MOUNTING BAR PROCEDURE

1. REMOVE BOTH END CAPS. THE RETAINER IS ATTACHED TO THE NOSE END CAP.
2. SLIDE PUSH BAR TOWARD HINGE SIDE OF DOOR.
3. CONTINUE TO SLIDE THE PUSH BAR PAST THE PIVOT PLATE THAT RIDES IN PUSH BAR TRACK.
4. SLIDE PUSH BAR IN OPPOSITE DIRECTION KEEPING PIVOT PLATE OUT OF TRACK UNTIL PUSH BAR IS FREE OF MOUNTING PLATE.



INSTALLING PUSH BAR TO MOUNTING BAR

1. WITH PUSH BAR IN HAND AND MOUNTING BAR ATTACHED TO DOOR, FIND STOP PLATE STAKED INTO PUSH BAR. (THIS PLATE IS ON THE LATCH END OF ASSEMBLED UNIT). SLIDE THE PIVOT PLATE NEAREST HINGE INTO TRACK OF PUSH BAR. UNTIL SECOND PIVOT PLATE IS EXPOSED. INSERT SECOND PIVOT PLATE INTO TRACK ON PUSH BAR AND SLIDE IN OPPOSITE DIRECTION UNTIL PUSH BAR AND MOUNTING BAR ALIGN.

LATCH & STRIKE INSTALLATION

INSTALL LATCH AND STRIKE USING SCREWS SHOWN. BE SURE LATCH AND STRIKE ARE SECURELY MOUNTED. NOTE: LATCH FOR BEVELED DOORS IS NOT REHANDABLE

MOUNTING BAR INSTALLATION

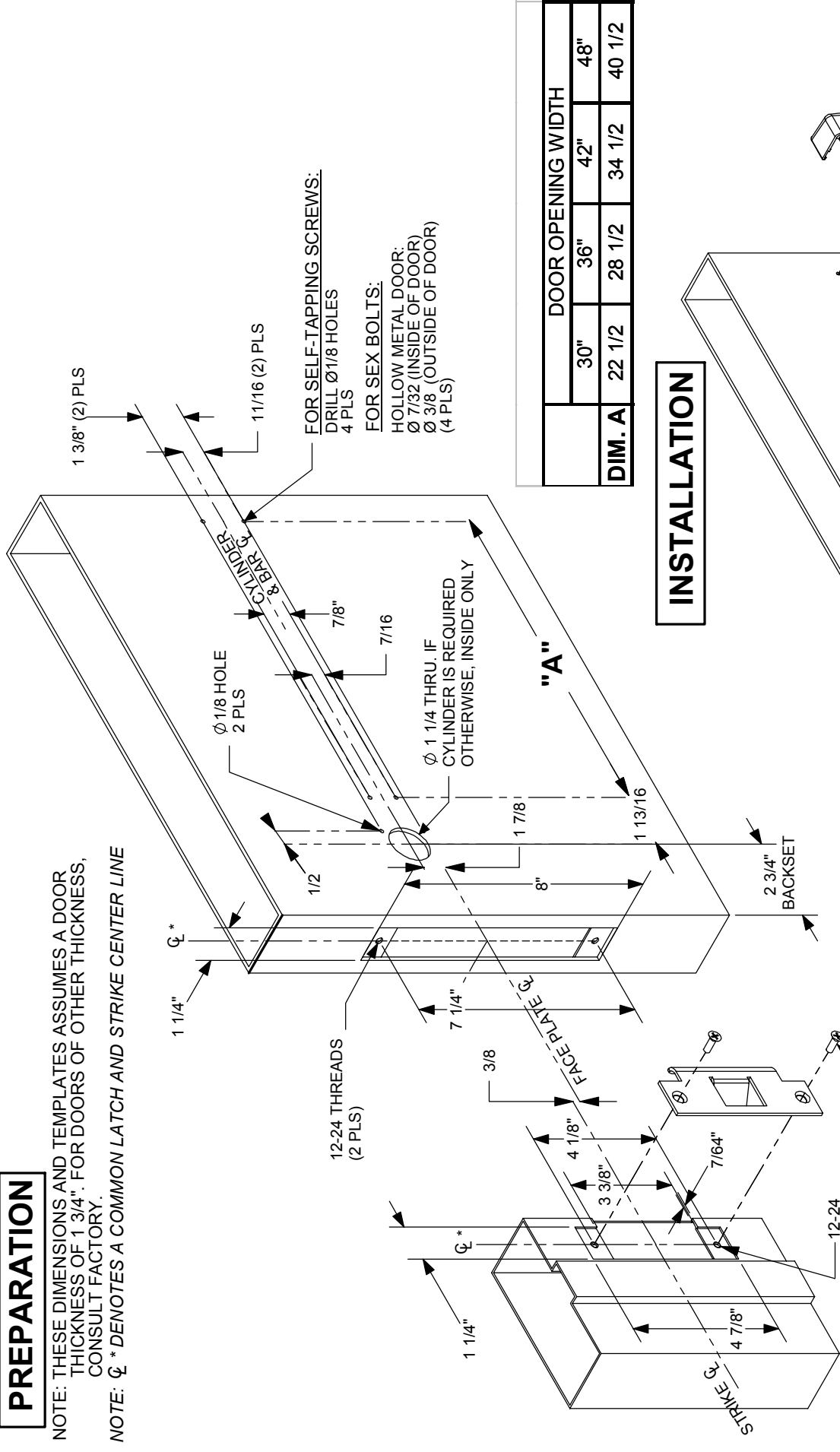
1. REMOVE PUSH BAR FROM MOUNTING BAR FOLLOWING THE "SEPARATING PUSH BAR AND MOUNTING BAR PROCEDURE."
2. DEPRESS LATCH BOLT.
3. INSERT BAR ASSEMBLY CAM PLUG THROUGH DOOR AND SIDE PLATE. NOTE: SQUARE KEY ON PLUG MUST ALIGN WITH SQUARE NOTCH ON SIDE PLATE.
4. USE #10 TYPE "AB" SELF-TAPPING SCREWS FOR BOTH HOLLOW METAL AND WOOD DOOR TO SECURE LATCH END OF MOUNTING BAR.
5. IF SEX BOLT ARE USED INSTEAD OF SELF-TAPPING SCREWS, INSERT SEX BOLTS THROUGH DOOR SO THEY ALIGN WITH 7/32 DIA HOLES ON INTERIOR OF DOOR. PLACE MOUNTING BAR AGAINST DOOR AND USE 10-32 MACHINE SCREWS TO ATTACH BAR TO DOOR.
6. INSTALL PUSH BAR. FOLLOWING "PUSH BAR TO MOUNTING BAR PROCEDURE".

NOTE: FOR CUTOFF INSTRUCTIONS FOR NON-STANDARD DOORS AND LATCH & BAR RE-HANDLING INSTRUCTIONS, SEE THE OPPOSITE SIDE OF THIS INSTRUCTION SHEET.

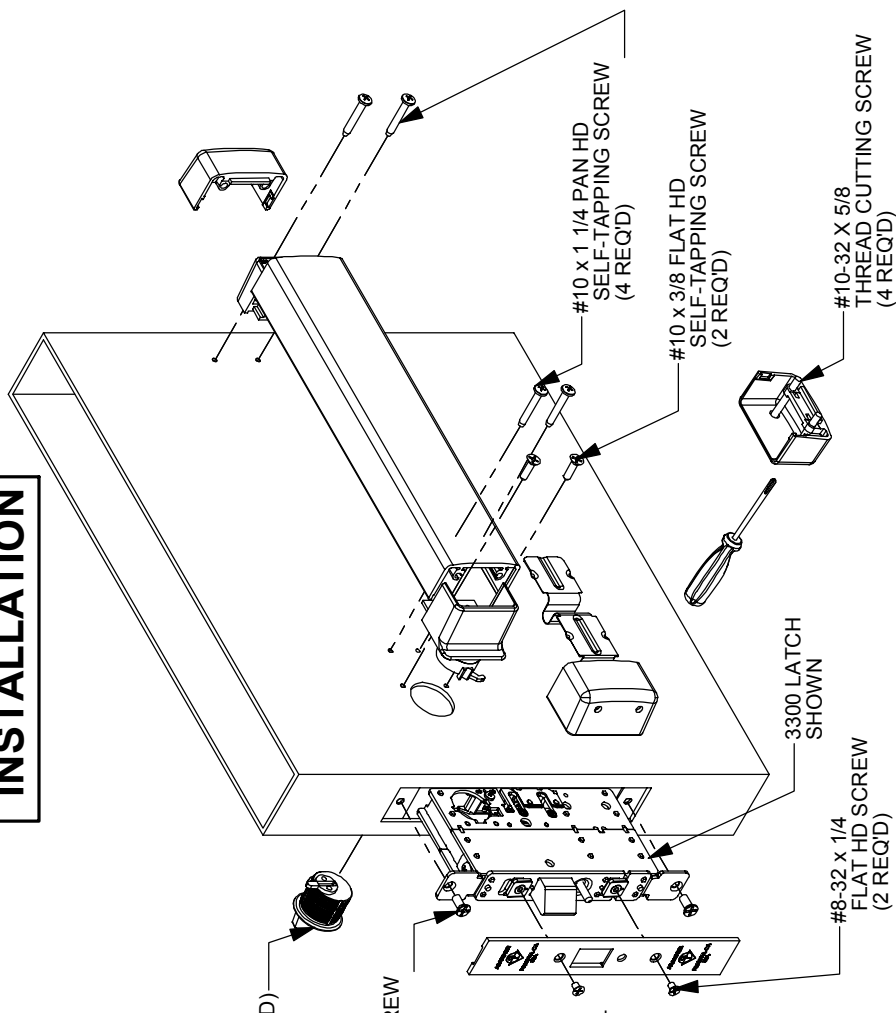
PREPARATION

NOTE: THESE DIMENSIONS AND TEMPLATES ASSUMES A DOOR THICKNESS OF 1 3/4". FOR DOORS OF OTHER THICKNESS, CONSULT FACTORY.

NOTE: ϕ * DENOTES A COMMON LATCH AND STRIKE CENTER LINE



INSTALLATION



BEVEL ADJUSTMENT (8300 ONLY)
ROTATE BEVEL TAB TO DESIRED HAND (FIG 1). USING THE BEVEL ADJUSTMENT ALLOWS THE FLAT FACEPLATE TO WORK IN BEVELED STILES.

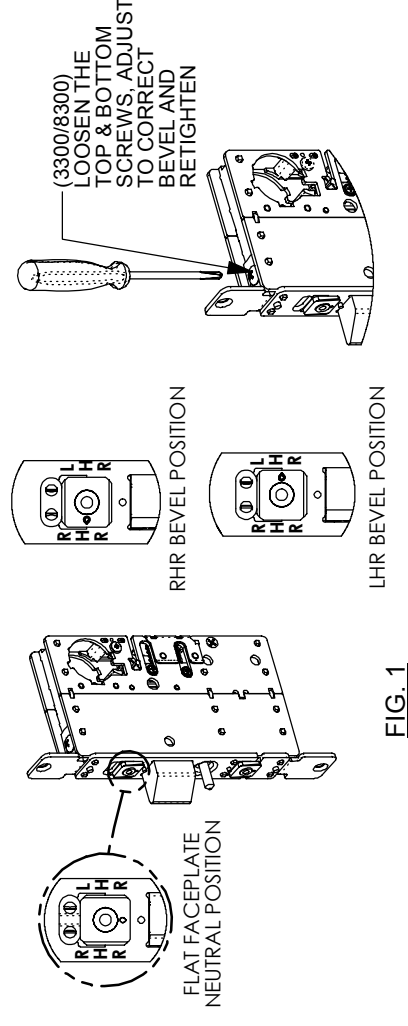


FIG. 1



ADAMS RITE
MANUFACTURING CO.
260 Santa Fe Street, Pomona, CA 91767
Phone: (909) 632-2300 Fax: (909) 632-2369

PART NO: 80-0180-83

REV	ECN	DATE	APPROVED
J	10813		

PRODUCT MUST BE INSTALLED ACCORDING TO ALL APPLICABLE BUILDING AND LIFE SAFETY CODES

3300 (FIRE RATED)/ 8300 (NON-RATED)
EXIT DEVICE
FOR HOLLOW METAL DOOR

CUT-OFF INSTRUCTIONS FOR NON-STANDARD DOORS

1. DRIVE OUT TWO ROLL PINS.
2. REMOVE MOUNTING CAP.
3. COLLAPSE BAR AND TAPE DOWN IN THE AREA OF CUT-OFF.
4. DETERMINE EXTRUSION LENGTH ("B" DIM.) (NOTE: 3 19/32 MIN. DIMENSION FROM RIVET CENTERLINE TO NEW CUT-OFF LENGTH AS SHOWN.)
5. MEASURE MOUNTING BAR (NOT PUSH BAR), AND MARK EXTRUSION LENGTH ON TAPE.
6. SAW OFF EXCESS LENGTH, REMOVE TAPE DEBURR.
7. LAY MOUNTING CAP OVER MOUNTING BAR (FIG. "C") AND USE AS A GUIDE TO DRILL TWO 1/8" DIA. HOLES.
8. RE-INSTALL MOUNTING CAP INTO MOUNTING BAR AND DRIVE TWO ROLL PINS INTO HOLES.

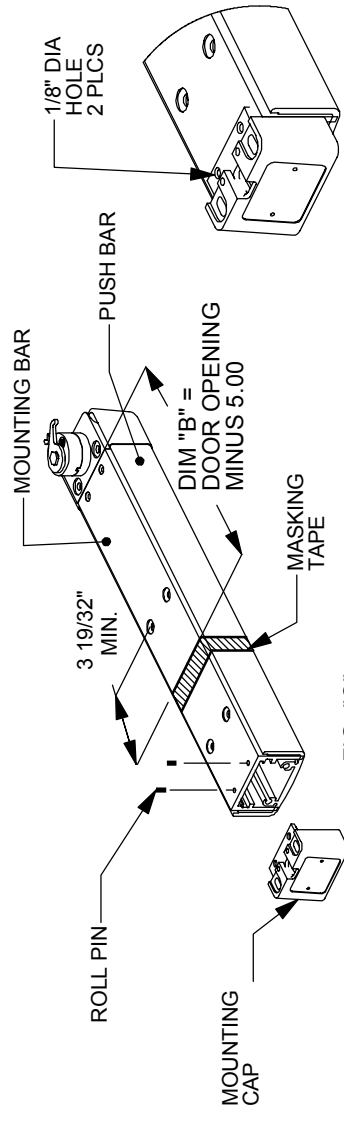
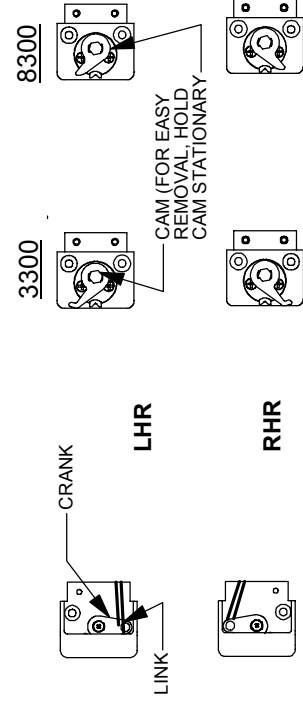
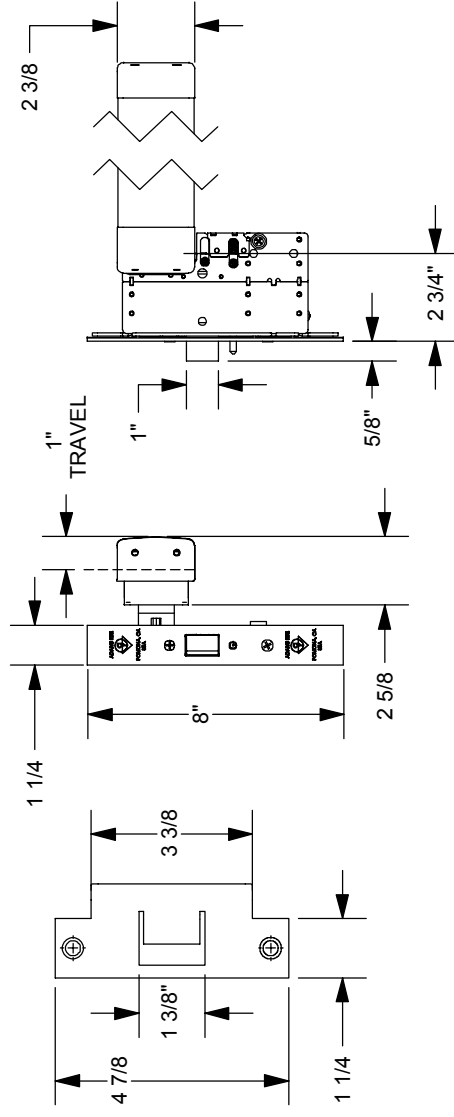


FIG. "C"



FRONT VIEW

- DEPRESS PUSH BAR AND MOVE CRANK ARM TO OPPOSITE SIDE. CONTINUE MOVING CRANK ARM AS YOU RELEASE BAR.

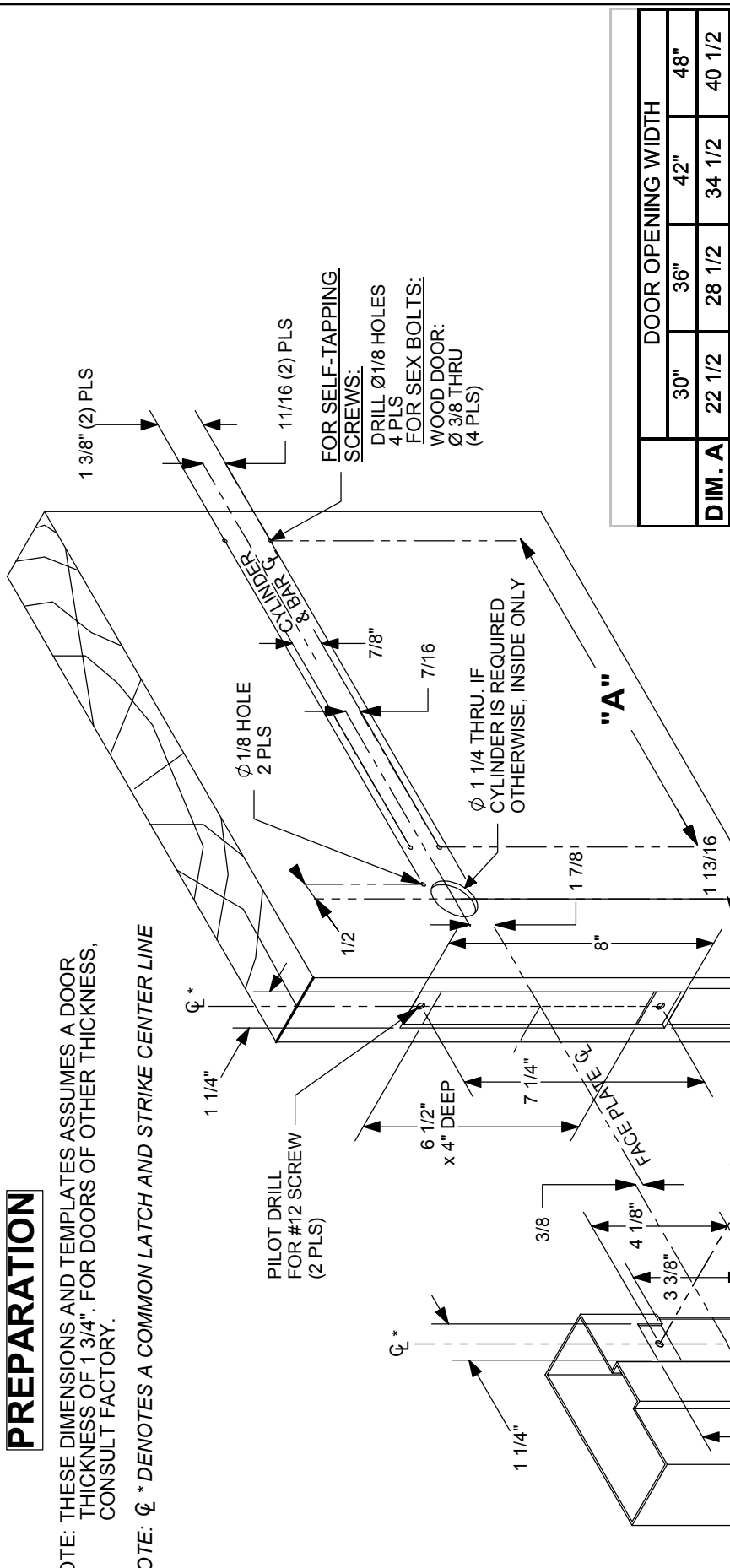
BACK VIEW

1. REMOVE CAM SCREW.
2. FLIP CAM OVER TO OPPOSITE POSITION.
3. REPLACE CAM SCREW AND TIGHTEN SECURELY.

PREPARATION

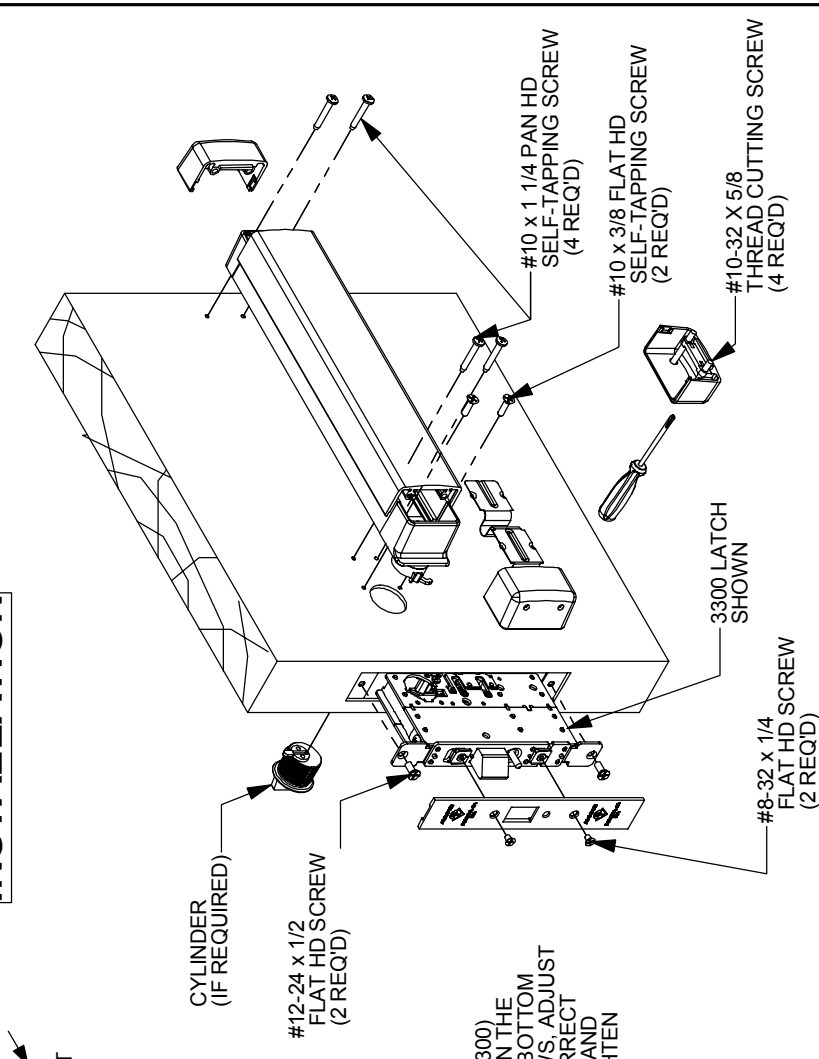
NOTE: THESE DIMENSIONS AND TEMPLATES ASSUMES A DOOR THICKNESS OF 1 3/4". FOR DOORS OF OTHER THICKNESS, CONSULT FACTORY.

NOTE: ϕ * DENOTES A COMMON LATCH AND STRIKE CENTER LINE



	DOOR OPENING WIDTH			
	30"	36"	42"	48"
DIM. A	22 1/2	28 1/2	34 1/2	40 1/2

INSTALLATION



BEVEL ADJUSTMENT (8300 ONLY)

ROTATE BEVEL TAB TO DESIRED HAND (FIG 1). USING THE BEVEL ADJUSTMENT ALLOWS THE FLAT FACEPLATE TO WORK IN BEVELED STILES.

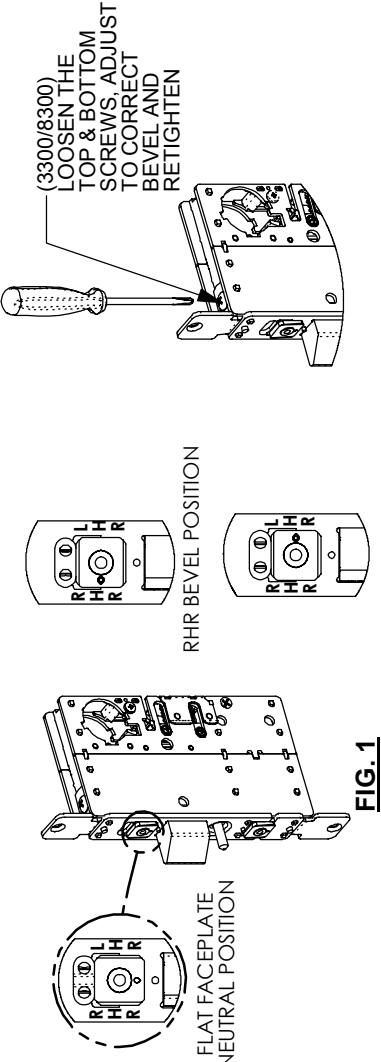


FIG. 1



PART NO: 80-0180-83

REV	ECN	DATE	APPROVED
J	10813		

PRODUCT MUST BE INSTALLED ACCORDING TO ALL APPLICABLE BUILDING AND LIFE SAFETY CODES

3300 (FIRE RATED)/ 8300 (NON-RATED)
EXIT DEVICE
FOR WOOD DOOR