

BACKSET		DOOR OPENING WIDTH			
1.080"		30"	42"	48"	48"
DIM	A	27.22"	33.22"	38.22"	45.22"

**CUT-OFF INSTRUCTIONS FOR NON-STANDARD DOORS.**

1. DRIVE OUT TWO ROLL PINS.
2. REMOVE MOUNTING CAP.
3. COLLAPSE BAR AND TAPE DOWN IN THE AREA OF CUT-OFF.
4. DETERMINE EXTENSION LENGTH (OF DOOR) (NOTE: 3.8" MINIMUM EXTENSION LENGTH REQUIRED FOR MOUNTING BAR).
5. MARK OFF MOUNTING BAR (WITH PUSH BAR) AND MARK EXTENSION LENGTH ON TAPE.
6. SAW OFF EXCESS LENGTH, REMOVE TAPE AND REBAR.
7. LAY MOUNTING BAR OVER MOUNTING BAR (FIG. "C"), AND USE AS A GUIDE TO DRILL TWO 0.125 DIA HOLES.
8. RE-INSTALL MOUNTING CAP INTO MOUNTING BAR.
9. SEE INSTALLATION INSTRUCTIONS.

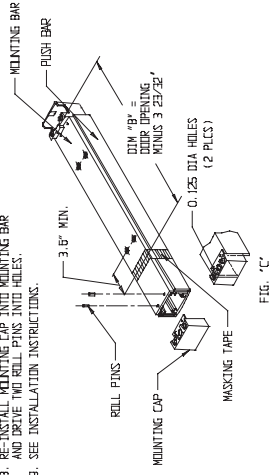
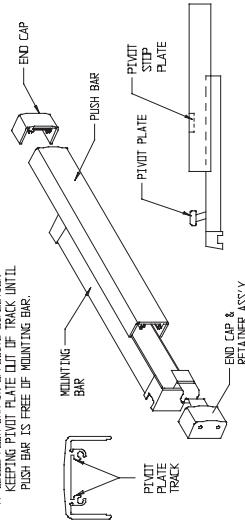


FIG. "C"

**SEPARATING PUSH BAR AND MOUNTING BAR PROCEDURE**

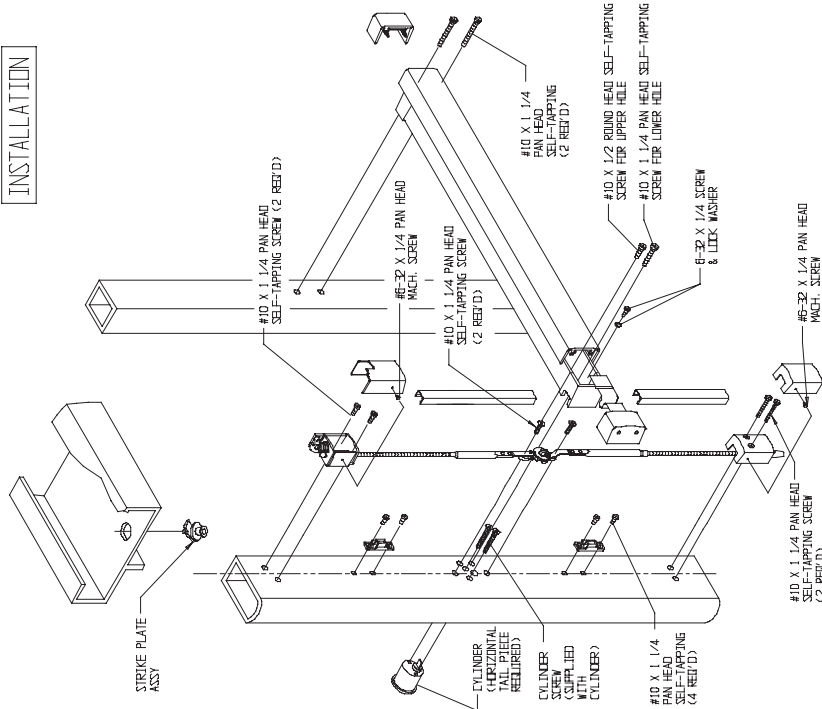
1. REMOVE BOTH END CAPS. THE RETAINER IS ATTACHED TO THE NOSE END CAP.
2. SLIDE PUSH BAR TOWARD HINGE SIDE OF DOOR.
3. CONTINUE TO SLIDE PUSH BAR PAST THE PIVOT PLATE THAT RIDES IN PUSH BAR TRACK.
4. SLIDE PUSH BAR IN OPPOSITE DIRECTION KEEPING PIVOT PLATE OUT OF TRACK UNTIL PUSH BAR IS FREE OF MOUNTING BAR.



**INSTALLING PUSH BAR TO MOUNTING BAR**

1. WITH PUSH BAR IN HAND AND MOUNTING BAR ATTACHED TO DOOR, FEEL PIVOT PLATE STICK INTO PUSH BAR. (THIS PLATE IS ON THE LATCH END OF ASSEMBLY UNIT). SLIDE THE PIVOT PLATE NEAREST HOLES INTO TRACK OF PUSH BAR UNTIL SECOND PIVOT PLATE IS EXPOSED. INSERT PIVOT PLATE INTO TRACK ON PUSH BAR AND SLIDE IN OPPOSITE DIRECTION UNTIL PUSH BAR AND MOUNTING BAR ALIGN.

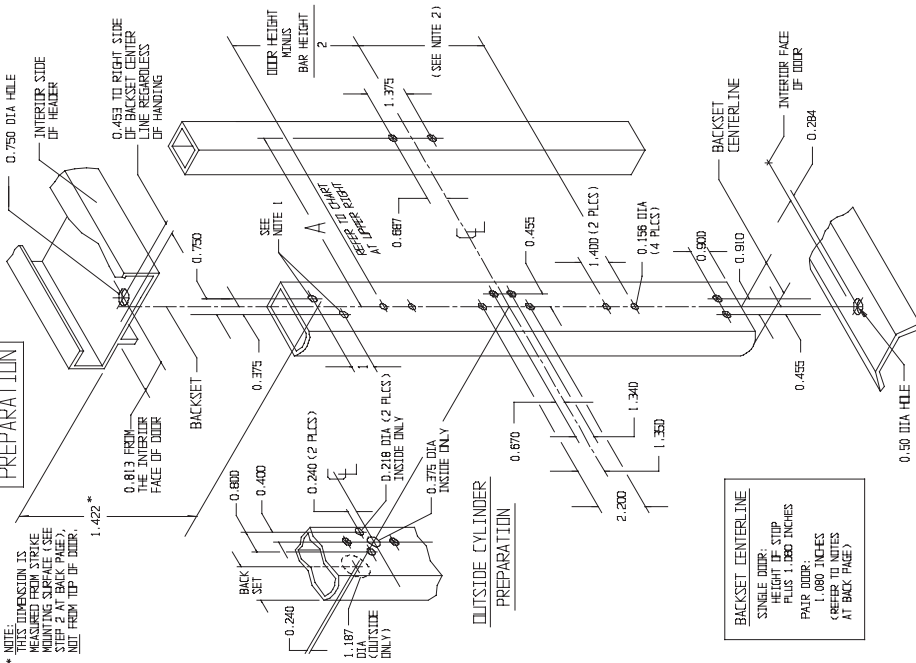
**INSTALLATION**



**METRIC EQUIVALENTS**

INCHES	MM	INCHES	MM	INCHES	MM	INCHES	MM
1.25	3.17	5.00	12.70	1	25.40	48/78	30
2.18	5.54	.870	17.02	1.080	27.43	2.200	55.88
2.90	7.38	.887	17.45	1.187	30.15	3.600	91.44
3.75	9.52	.800	20.32	1.340	34.04	3.718	94.43
4.00	10.16	.900	22.86	1.350	34.29	3.750	95.25
4.55	11.55	.910	23.11	1.400	35.56	27.22	691.36
						48	1219.20

**PREPARATION**



\* NOTE: THIS DIMENSION IS MEASURED FROM STRIKE MOUNTING SURFACE (SEE STEP 2 AT BACK PAGE), NOT FROM TOP OF DOOR.

**BACKSET CENTERLINE**  
 SINGLE CYLINDER, STRIP  
 PATR DOOR: 1.080 INCHES  
 (REFER TO NOTES AT BACK PAGE)

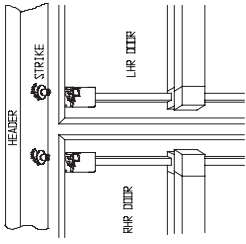
NOTE 1: UNLESS OTHERWISE SPECIFIED, DRILL .156 DIA FOR 10 HOLES (Ø)  
 NOTE 2: WHEN BAR HEIGHT IS 36" OR MORE, DIVIDE BAR HEIGHT BY 2. OTHERWISE, USE 18" AS THE DIMENSION  
 NOTE: THESE DIRECTIONS AND TEMPLATES ASSUME A DOOR THICKNESS OF 1.75" WITH 1/8" WALL.  
 FOR DOORS OF OTHER THICKNESS, CONSULT FACTORY.

ADAMS RITE MANUFACTURING COMPANY  
 CITY OF INDUSTRY, CALIF. 91749

8200 EXIT DEVICE  
 FOR NARROW STILE GLASS DOOR

# INSTALLATION INSTRUCTION CHECKLIST

ADAMS RITE EXIT DEVICE SERIES 8200

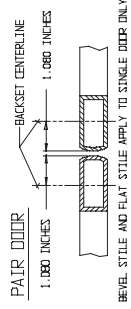
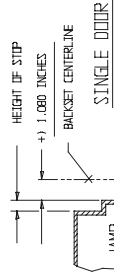


### IMPORTANT!

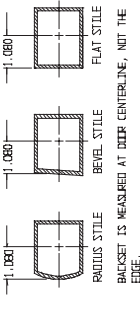
This device is unthreaded. It can be installed in either left hand reverse or right hand reverse operation. The left hand reverse operation is the same as the right hand reverse operation, but the yoke and hammer preparation are IDENTICAL, not in reverse. NOTE in the sketch above that the yoke type bolt always faces right (as viewed from inside) and the spike post is toward the right of the lockset centerline for both doors.

**NOTE** STEPS 1 THRU 10 ARE MORE EASILY ACCOMPLISHED IF DOOR IS NOT INSTALLED IN FRAME.

### HOW TO FIND BACKSETS



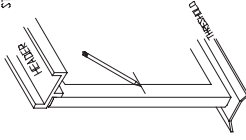
BEVEL STILE AND FLAT STILE APPLY TO SINGLE DOOR ONLY.



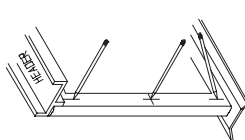
### STEP 1

(SHOW AFTER DOOR IS HUNG)

(1) MARK BAR HEIGHT ON INSIDE OF DOOR AND INSIDE OF HEAD. IF CYLINDER WILL BE FITTED).

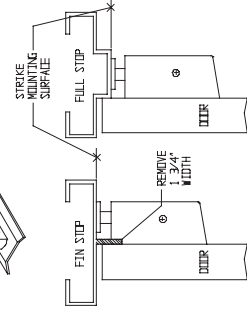
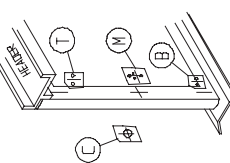


(2) MARK BACKSET CENTERLINE AT TOP, BAR HEIGHT AND BOTTOM. (ALSO MARK ON OUTSIDE AT BAR HEIGHT IF CYLINDER TO BE FITTED).



### STEP 2

(3) FEEL OFF BACKING AND APPLY CLEAR STICK-ON TEMPLATES OVER THE PENCIL LINES AND DRILL WHERE SHOWN.



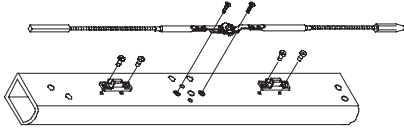
NOTE THAT LOCATION OF TEMPLATE (1) WILL VARY FOR FIN STOP. REMOVE 1/32" WIDE SECTION OF FIN AND MOUNT STRIKE TO HEADER. FOR FULL STOP, MOUNT STRIKE TO STOP.

### STEP 3

INSTALL 2 PLASTIC GUIDES IN BACKSET CENTERLINE; ONE HALFWAY FROM BAR HEIGHT TO TOP OF DOOR, ANOTHER HALFWAY TO BOTTOM OF DOOR. (USE ROD GUIDE AS TEMPLATE TO DRILL 0.1875 DIA HOLES FOR SELF-TAPPING SCREWS).

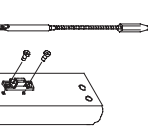
### STEP 4

IF CYLINDER IS REQUIRED, INSTALL IT NOW WITH CYLINDER STEMS THROUGH DOOR.



### STEP 5

REMOVE TEMPLATE. LAY ROD MECHANISM ON PREPARED DOOR AND SECURE GEAR PLATE WITH TWO PAN HEAD SCREWS. SNAP THREADED RODS INTO TWO PLASTIC ROD GUIDES.

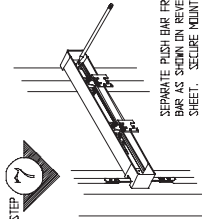


### STEP 6

ADJUST RODS TO LENGTH: WITH GEARS ALIGNED TO STAMPED MARKS (SEE FIGURE AT STEP 8), ADJUST TOP ROD TO LENGTH BY TURNING IT TO ALIGN MARK ON TEMPLATE (1) WITH SQUARE BELT. (FOR NOW).

### STEP 7

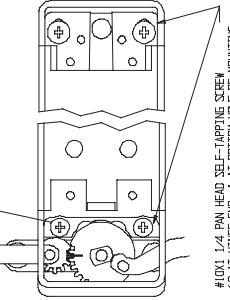
SEPARATE RUSH BAR FROM MOUNTING SHEET. SECURE MOUNTING BAR TEMPORARILY IN LEVEL POSITION AND MARK HINGE SIDE FOR MOUNTING HOLES.



### STEP 8

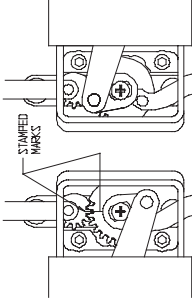
REMOVE BAR, DRILL .1875 DIA HOLES IN HINGE STILE. REINSTALL BAR PERMANENTLY WITH FOUR SCREWS AS SHOWN BELOW.

1.00X1/2 ROUND HEAD SELF-TAPPING SCREWS (2 AT HINGE END, 1 AT BOTTOM HOLE OF MOUNTING BASE)



#10X1 1/4 PAN HEAD SELF-TAPPING SCREW (2 AT HINGE END, 1 AT BOTTOM HOLE OF MOUNTING BASE)

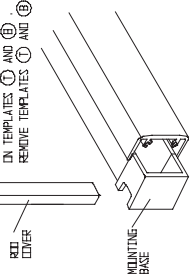
SECURE CRANK ON DRIVER SHAFT WITH LOCK WASHER AND SCREW. THEN REINSTALL THE PUSH BAR.



RHR DOOR WILL LOOK LIKE THIS

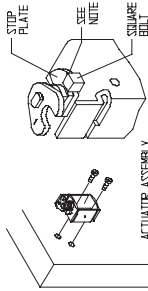
### STEP 9

CUT ROD COVER TO LENGTH. INSERT END IN MOUNTING BASE AND CUT AS SHOWN ON STICK-ON TEMPLATES (1) AND (2). REMOVE TEMPLATES (1) AND (2).



### STEP 10

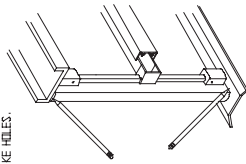
INSTALL TOP BELT ACTUATOR ASSEMBLY AND SECURE WITH TWO SCREWS. SNAP ROD COVER INTO PLASTIC ROD GUIDE AND SLIDE IT DOWN INTO MOUNTING BASE. WITH ASSEMBLY IN LOCKED POSITION AND PUSH BAR RELEASED, END OF SQUARE BELT SHOULD ENGAGE STOP PLATE AS SHOWN. (FOR FINE ADJUSTMENT, REMOVE ACTUATOR ASSEMBLY, ADJUST BELT UP OR DOWN AND REINSTALL ASSEMBLY).



NOTE: SQUARE BELT MUST BE FLUSH WITH TOP OF STOP PLATE.

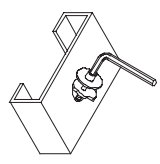
### STEP 11

INSTALL STOP IN FRAME. MARK ON HEADER, THRESHOLD, THE BACKSET CENTERLINE AND WHERE FACE OF CLOSED DOOR RESTS. APPLY CLEAR TEMPLATES (3) AND (4) AND DRILL STRIKE HOLES.



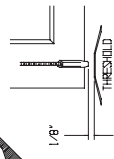
### STEP 12

POSITION STRIKE PLATE ASSEMBLY ON HEADER. THEN, TIGHTEN SECURELY WITH HEX WRENCH. (TORQUE TO 110 IN-LBS MAX.)



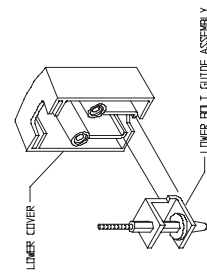
### STEP 13

HOLD DOOR OPEN. DEPRESS AND RELEASE PUSH BAR. ADJUST BOTTOM BELT SO IT CLEARS THRESHOLD BY 1/8" AS DOOR CLOSSES.



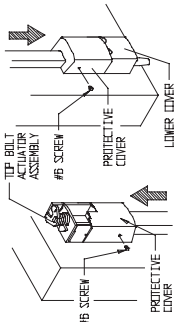
### STEP 14

INSTALL LOWER COVER. SNAP ALUMINUM ROD COVER ONTO PLASTIC ROD GUIDE AND SLIDE IT UP INTO MOUNTING BASE. SLIP LOWER BELT GUIDE ASSEMBLY OVER HEX BELT AND DROP INTO LOWER COVER SHOWN. POSITION LOWER COVER AND SECURE IT WITH TWO SCREWS.



### STEP 15

INSTALL TWO PROTECTIVE COVERS ON TOP BELT ACTUATOR ASSEMBLY AND LOWER COVER. SLIDE PROTECTIVE COVERS INTO TOP BELT ACTUATOR ASSEMBLY AND LOWER COVER. SECURE EACH COVER WITH ONE SCREW AT SIDE.



### STEP 16

INSTALL RUSH BAR END CAPS

