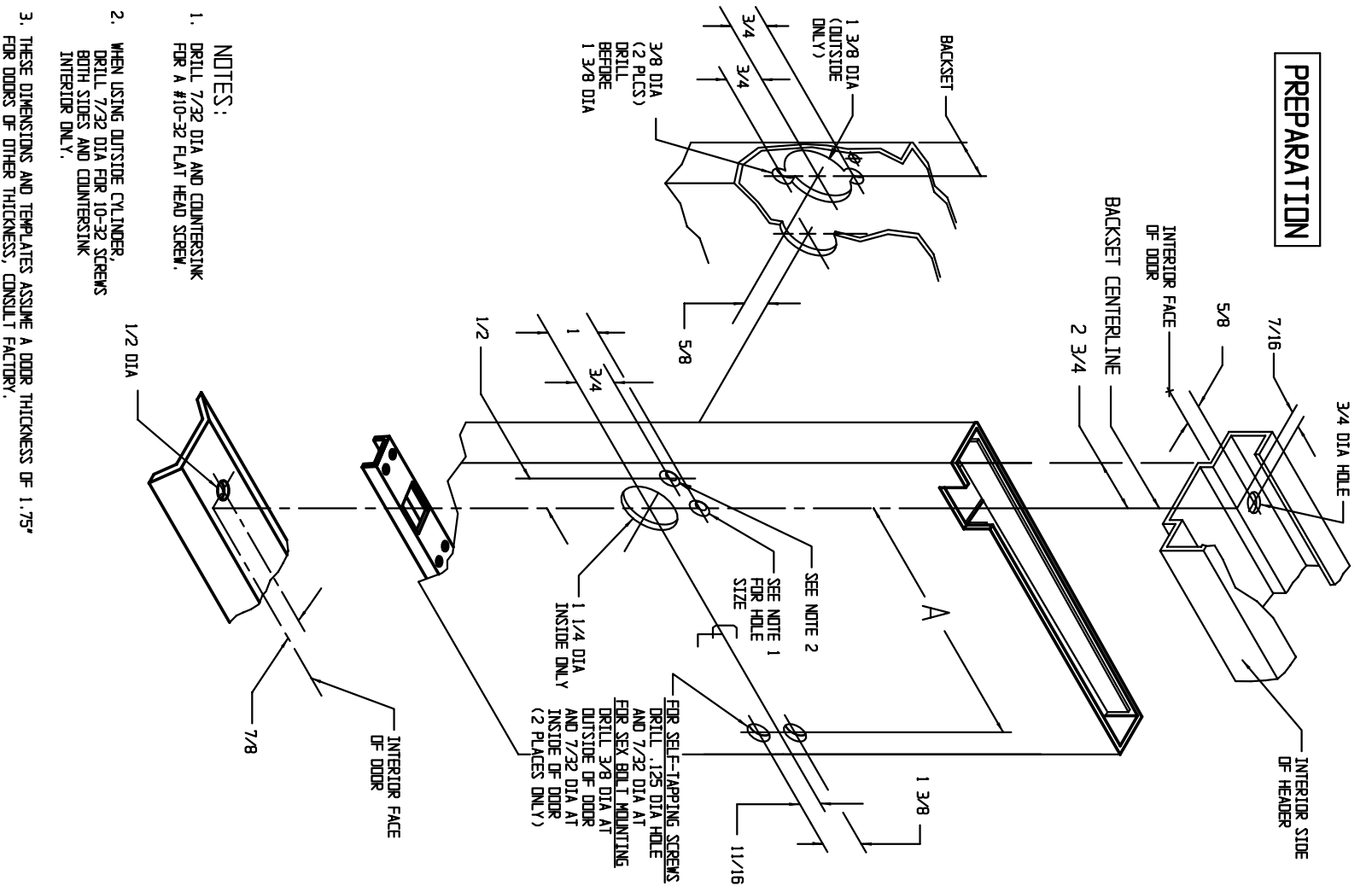
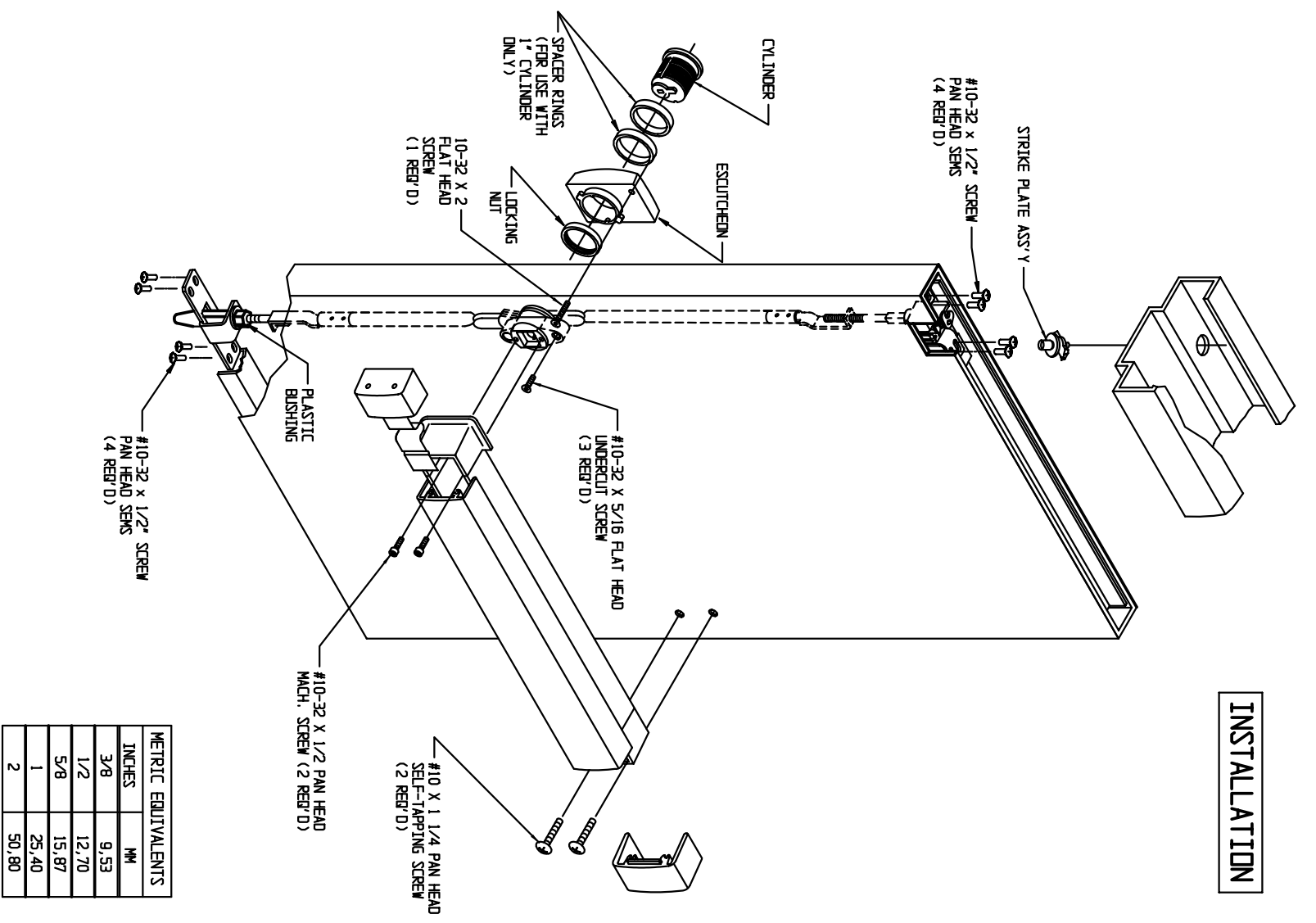


PREPARATION



- NOTES:**
1. DRILL 7/32 DIA AND COUNTERSINK FOR A #10-32 FLAT HEAD SCREW.
 2. WHEN USING OUTSIDE CYLINDER, DRILL 7/32 DIA FOR 10-32 SCREWS BOTH SIDES AND COUNTERSINK INTERIOR ONLY.
 3. THESE DIMENSIONS AND TEMPLATES ASSUME A DOOR THICKNESS OF 1.75" FOR DOORS OF OTHER THICKNESS, CONSULT FACTORY.

INSTALLATION

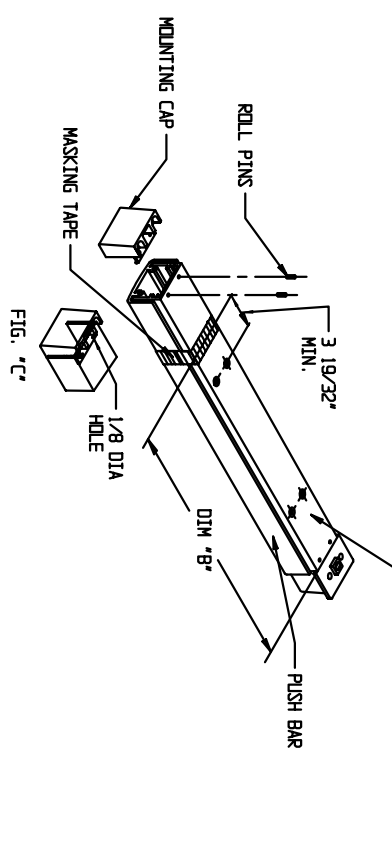


METRIC EQUIVALENTS	INCHES	MM
	3/8	9.53
	1/2	12.70
	5/8	15.87
	1	25.40
	2	50.80

DOOR OPENING WIDTH			
DIM	A		
	30"	36"	42"
	24 1/4"	30 1/4"	36 1/4"
			42 1/4"

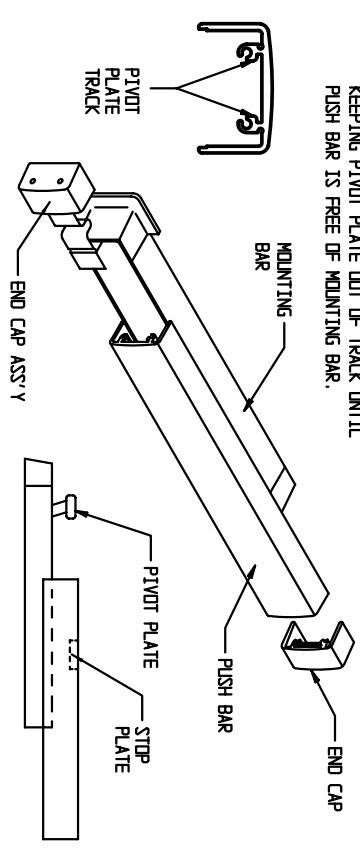
CUT-OFF INSTRUCTIONS FOR NON-STANDARD DOORS

1. DRIVE OUT TWO ROLL PINS.
2. REMOVE MOUNTING CAP.
3. COLLAPSE BAR AND TAPE DOWN IN THE AREA OF CUT-OFF.
4. DETERMINE EXTRUSION LENGTH ("C" DIM.); (NOTE: 3 19/32" MINIMUM DIMENSION FROM RIVET CENTERLINE TO NEW CUT-OFF LENGTH AS SHOWN).
5. MEASURE MOUNTING BAR (NOT PUSH BAR), AND MARK EXTRUSION LENGTH ON TAPE.
6. SAW OFF EXCESS LENGTH, REMOVE TAPE AND DEBRIS.
7. LAY MOUNTING CAP OVER MOUNTING BAR (FIG. "C"), AND USE AS A GUIDE TO DRILL TWO 1/8" DIA HOLES.
8. RE-INSTALL MOUNTING CAP INTO MOUNTING BAR AND DRIVE TWO ROLL PINS INTO HOLES.



SEPARATING PUSH BAR AND MOUNTING BAR PROCEDURE

1. REMOVE BOTH END CAPS. THE RETAINER IS ATTACHED TO THE NOSE END CAP.
2. SLIDE PUSH BAR TOWARD HINGE SIDE OF DOOR.
3. CONTINUE TO SLIDE PUSH BAR PAST THE PIVOT PLATE THAT RIDES IN PUSH BAR TRACK.
4. SLIDE PUSH BAR IN OPPOSITE DIRECTION KEEPING PIVOT PLATE OUT OF TRACK UNTIL PUSH BAR IS FREE OF MOUNTING BAR.



INSTALLING PUSH BAR TO MOUNTING BAR

1. WITH PUSH BAR IN HAND AND MOUNTING BAR ATTACHED TO DOOR, FIND STOP PLATE STAKED INTO PUSH BAR. (THIS PLATE IS ON THE LATCH END OF ASSEMBLED UNIT). SLIDE THE PIVOT PLATE NEAREST HINGE INTO TRACK OF PUSH BAR UNTIL SECOND PIVOT PLATE IS EXPOSED. INSERT PIVOT PLATE INTO TRACK ON PUSH BAR AND SLIDE IN OPPOSITE DIRECTION UNTIL PUSH BAR AND MOUNTING BAR ALIGN.

ADAMS RITE MANUFACTURING COMPANY
POMONA, CALIF. 91767

3600 FIRE RATED EXIT DEVICE
FOR HOLLOW METAL DOOR AND FRAME

