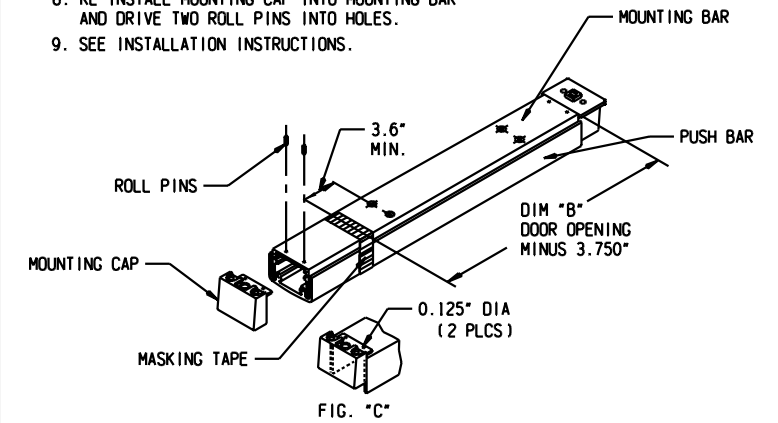


PRODUCT MUST BE INSTALLED  
ACCORDING TO ALL APPLICABLE  
BUILDING AND LIFE SAFETY CODES

BACKSET 1.05"	DOOR OPENING WIDTH			
	30"	36"	42"	48"
DIM A	27.25	33.25	39.25	45.25

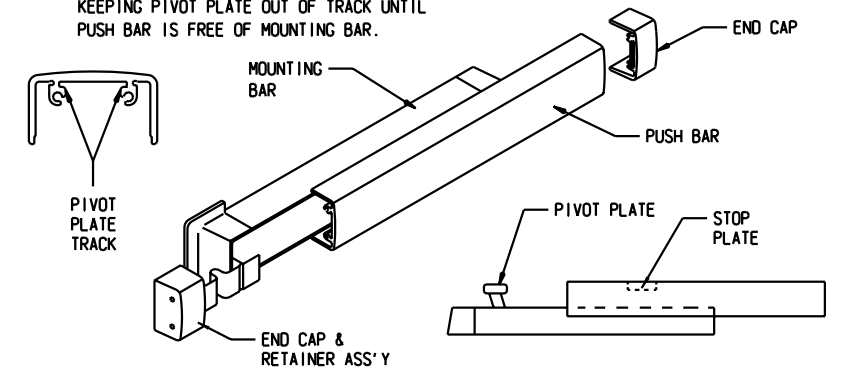
CUT-OFF INSTRUCTIONS FOR NON-STANDARD DOORS

1. DRIVE OUT TWO ROLL PINS.
2. REMOVE MOUNTING CAP.
3. COLLAPSE BAR AND TAPE DOWN IN THE AREA OF CUT-OFF.
4. DETERMINE EXTRUSION LENGTH ("B" DIM). (NOTE: 3.6" MINIMUM DIMENSION FROM RIVET CENTERLINE TO NEW CUT-OFF LENGTH AS SHOWN).
5. MEASURE MOUNTING BAR (NOT PUSH BAR), AND MARK EXTRUSION LENGTH ON TAPE.
6. SAW OFF EXCESS LENGTH. REMOVE TAPE AND DEBURR.
7. LAY MOUNTING CAP OVER MOUNTING BAR (FIG "C"), AND USE AS A GUIDE TO DRILL 0.125" DIA HOLES.
8. RE-INSTALL MOUNTING CAP INTO MOUNTING BAR AND DRIVE TWO ROLL PINS INTO HOLES.
9. SEE INSTALLATION INSTRUCTIONS.



SEPARATING PUSH BAR AND MOUNTING BAR PROCEDURE

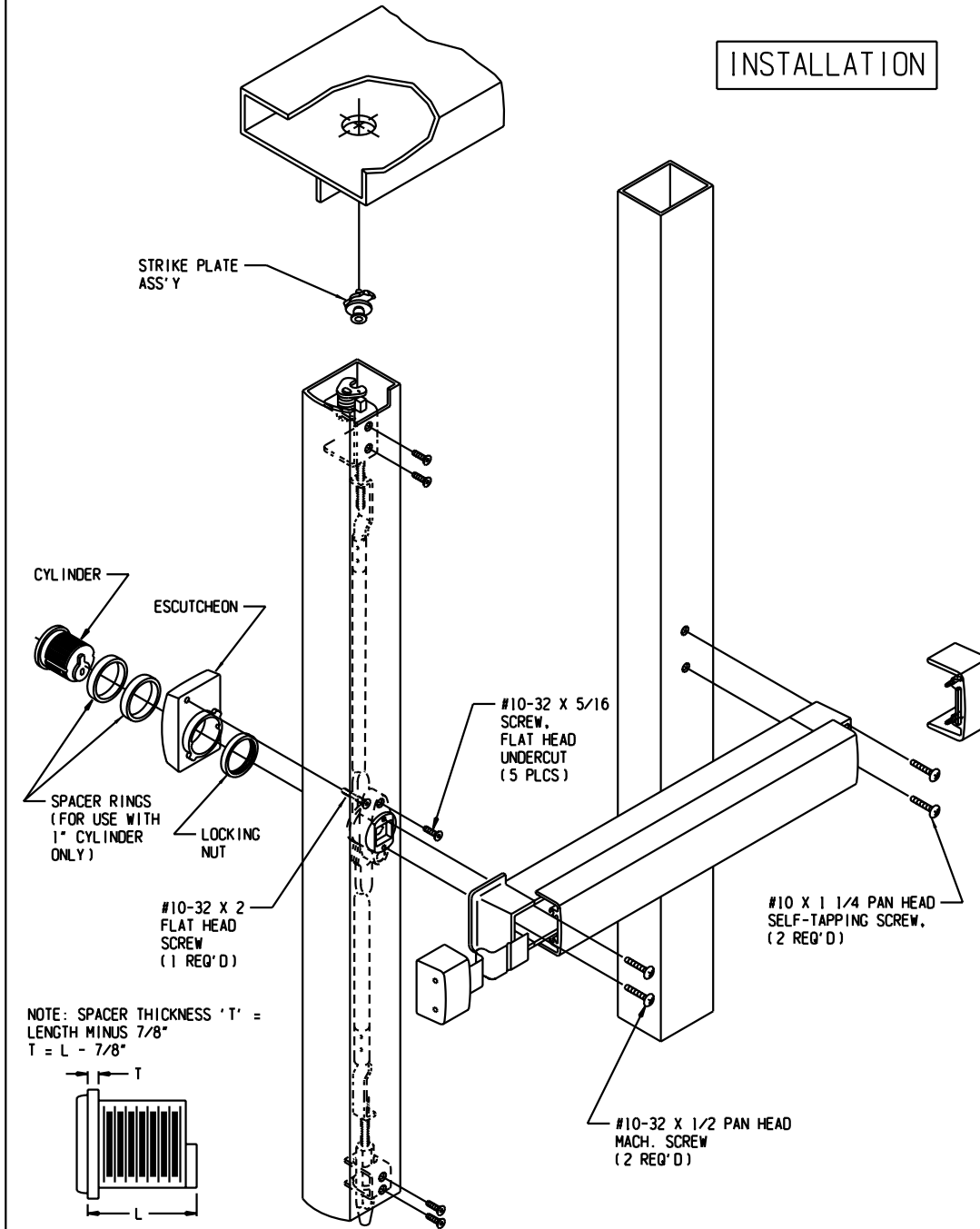
1. REMOVE BOTH END CAPS. THE RETAINER IS ATTACHED TO THE NOSE END CAP.
2. SLIDE PUSH BAR TOWARD HINGE SIDE OF DOOR.
3. CONTINUE TO SLIDE PUSH BAR PAST THE PIVOT PLATE THAT RIDES IN PUSH BAR TRACK.
4. SLIDE PUSH BAR IN OPPOSITE DIRECTION KEEPING PIVOT PLATE OUT OF TRACK UNTIL PUSH BAR IS FREE OF MOUNTING BAR.



INSTALLING PUSH BAR TO MOUNTING BAR

1. WITH PUSH BAR IN HAND AND MOUNTING BAR ATTACHED TO DOOR, FIND STOP PLATE STAKED INTO PUSH BAR. (THIS PLATE IS ON THE LATCH END OF ASSEMBLED UNIT). SLIDE THE PIVOT PLATE NEAREST HINGE INTO TRACK OF PUSH BAR UNTIL SECOND PIVOT PLATE IS EXPOSED. INSERT PIVOT PLATE INTO TRACK ON PUSH BAR AND SLIDE IN OPPOSITE DIRECTION UNTIL PUSH BAR AND MOUNTING BAR ALIGN.

INSTALLATION

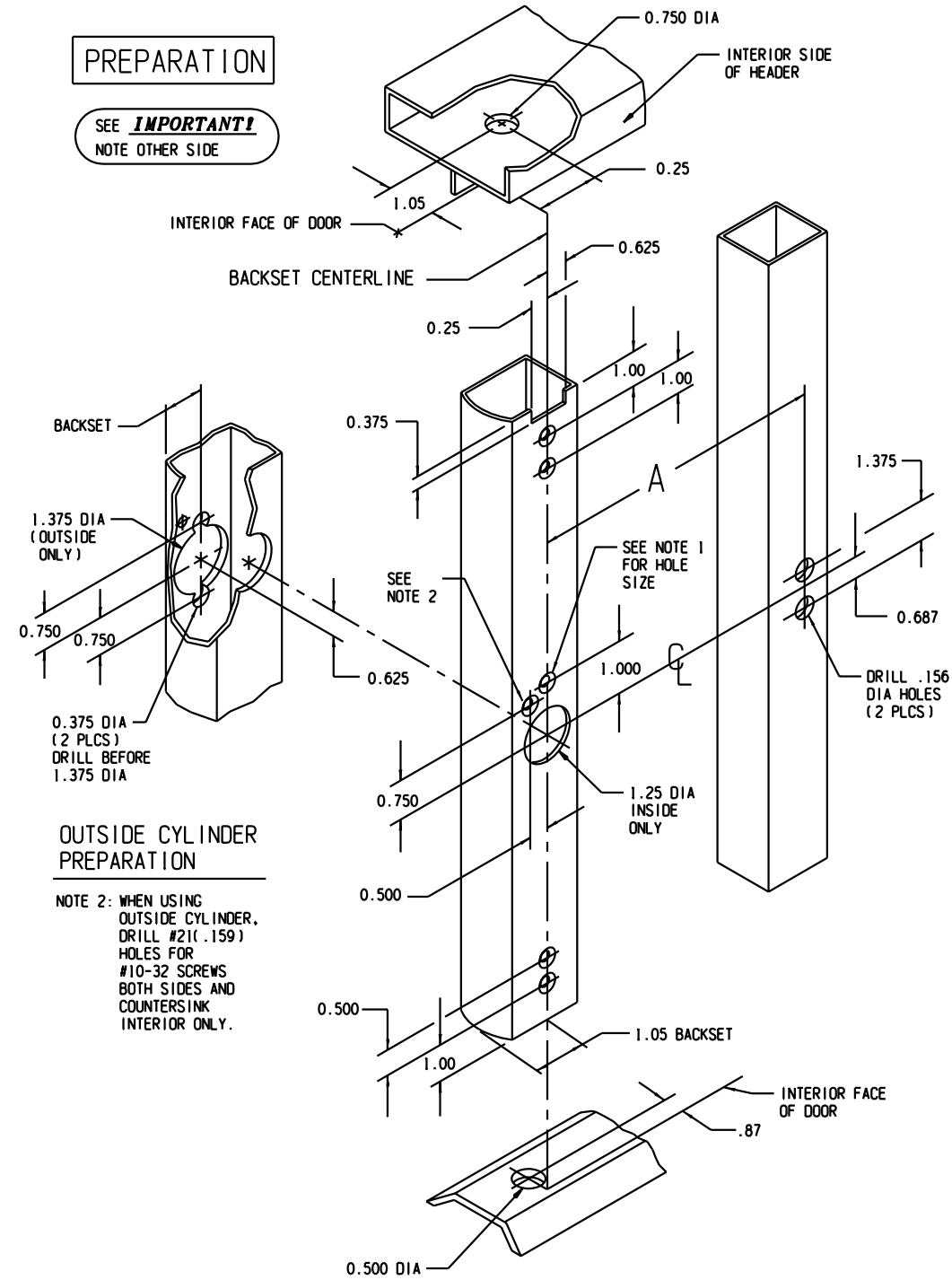


METRIC EQUIVALENTS

INCHES	MM	INCHES	MM	INCHES	MM	INCHES	MM	INCHES	MM	INCHES	MM
0.125	3.18	0.687	17.45	1.250	31.75	27.25	692.15	42	1066.80	5/16	7.92
0.250	6.35	0.750	19.05	1.375	34.92	30	762.00	45.25	1149.35	5/8	15.88
0.375	9.52	0.87	22.10	2.000	50.80	33.25	844.55	48	1219.20		
0.500	12.70	1.00	25.40	3.6	91.44	36	914.40				
0.625	15.87	1.05	26.67	3.750	95.25	39.25	996.95				

PREPARATION

SEE **IMPORTANT!**  
NOTE OTHER SIDE



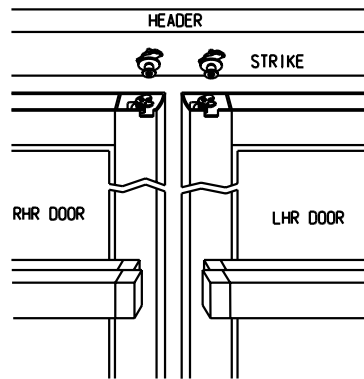
OUTSIDE CYLINDER PREPARATION

NOTE 2: WHEN USING OUTSIDE CYLINDER, DRILL #21(.159) HOLES FOR #10-32 SCREWS BOTH SIDES AND COUNTERSINK INTERIOR ONLY.

NOTE 1: DRILL #21(.159) AND COUNTERSINK 5 HOLES FOR #10-32 FLAT HEAD SCREWS.  
NOTE: THESE DIMENSIONS AND TEMPLATES ASSUME A DOOR 1.75" THICK WITH 1/8" STILE WALL. DOORS WITH OTHER THICKNESS OR WALL WILL REQUIRE MODIFICATION TO THE DEVICE AND TO TEMPLATES (H) AND (F).

# INSTALLATION INSTRUCTION CHECKLIST

ADAMS RITE  
SERIES **8600** EXIT  
DEVICE

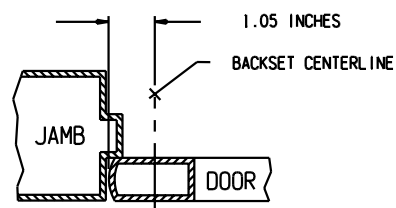


### IMPORTANT!

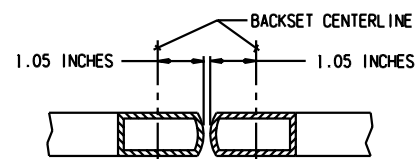
This device is unhande. It can be installed in either left hand reverse or right hand reverse doors without alteration. The doors' lead stile and header preparation are IDENTICAL *not* mirror image. Note in the sketch above that the yoke type bolt *always* faces right (as viewed from inside) and the strike post is toward the right of the backset centerline for *both* doors.

**NOTE** STEPS 1 THRU 9 ARE MORE EASILY ACCOMPLISHED IF DOOR IS NOT INSTALLED IN FRAME.

### HOW TO FIND BACKSET

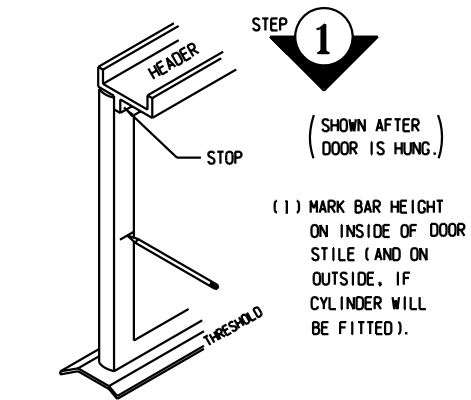


SINGLE DOOR

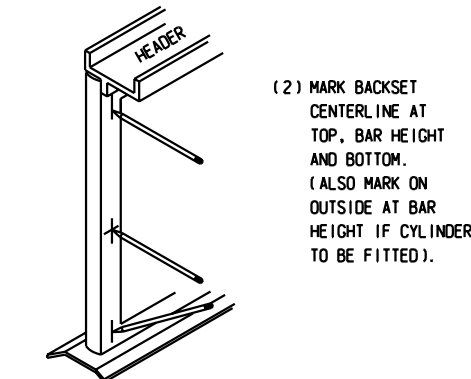


BEVEL STILE AND FLAT STILE APPLY TO SINGLE DOOR ONLY.

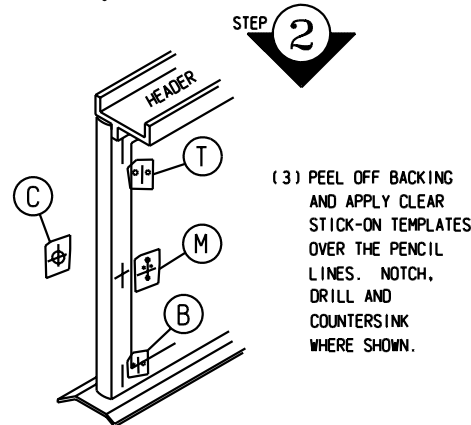
PAIR DOOR



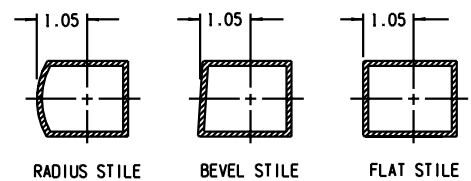
**STEP 1**  
(SHOWN AFTER DOOR IS HUNG.)  
(1) MARK BAR HEIGHT ON INSIDE OF DOOR STILE (AND ON OUTSIDE, IF CYLINDER WILL BE FITTED).



(2) MARK BACKSET CENTERLINE AT TOP, BAR HEIGHT AND BOTTOM. (ALSO MARK ON OUTSIDE AT BAR HEIGHT IF CYLINDER TO BE FITTED).

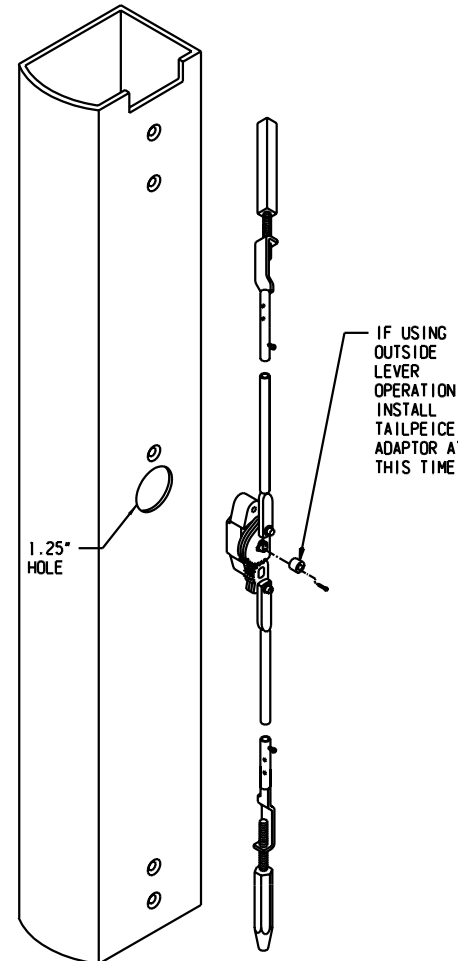


**STEP 2**  
(3) PEEL OFF BACKING AND APPLY CLEAR STICK-ON TEMPLATES OVER THE PENCIL LINES. NOTCH, DRILL AND COUNTERSINK WHERE SHOWN.

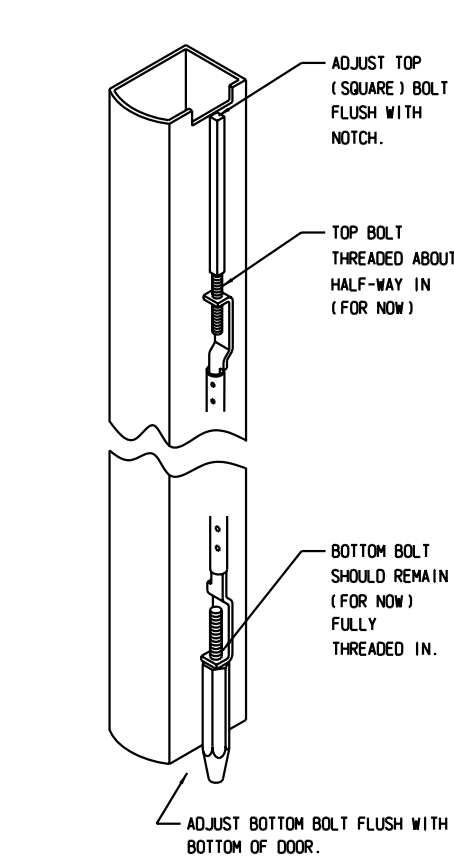
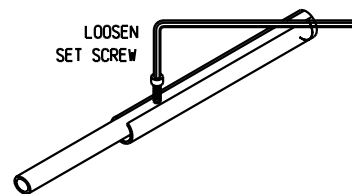


BACKSET IS MEASURED AT DOOR CENTERLINE, NOT THE EDGE.

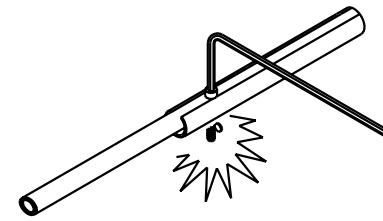
**STEP 3**  
LAY ROD MECHANISM ON PREPARED DOOR WITH GEAR PLATES OUTWARD AND CASTING RESTING IN 1 1/4" DIAMETER HOLE IN DOOR AS SHOWN BELOW.



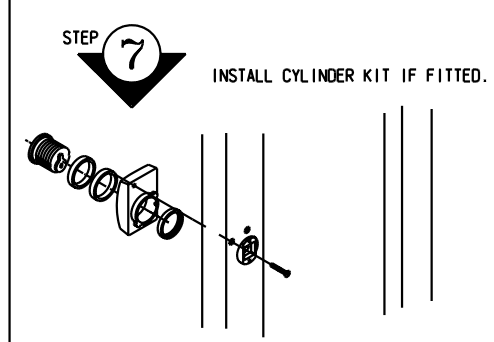
**STEP 4**  
ADJUST RODS TO APPROXIMATE LENGTH. (ROUGH ADJUSTMENT FOR NOW)



**STEP 5**  
WHEN ROUGH ADJUSTMENT OF RODS IS CORRECT, TIGHTEN METAL-PIERCING SCREWS ALL THE WAY THRU TUBE. YES! ALL THE WAY THROUGH AND TIGHT.



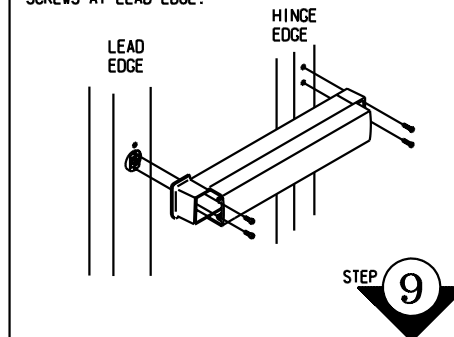
**STEP 6**  
(YOU CAN USE ONE OF THE SCREWS AS A TEMPORARY HANDLE TO POSITION CASTING).  
WITH SLOT IN VERTICAL POSITION



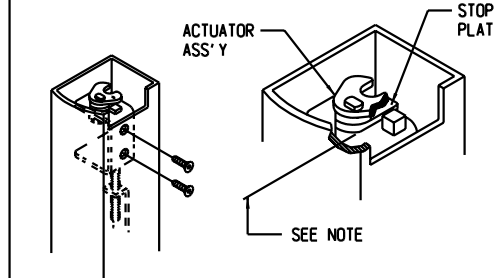
**STEP 7**  
INSTALL CYLINDER KIT IF FITTED.

**STEP 8**  
SEPARATE PUSH BAR FROM MOUNTING BAR AS SHOWN ON REVERSE OF THIS SHEET. SECURE MOUNTING BAR TEMPORARILY IN LEVEL POSITION AND MARK HINGE SIDE FOR MOUNTING HOLES.

REMOVE BAR, DRILL .156" DIA HOLES AT HINGE EDGE. INSTALL BAR WITH TWO #10 X 1 1/4 SELF-TAPPING SCREWS AT HINGE EDGE AND TWO #10-32 X 1/2 MACHINE SCREWS AT LEAD EDGE.

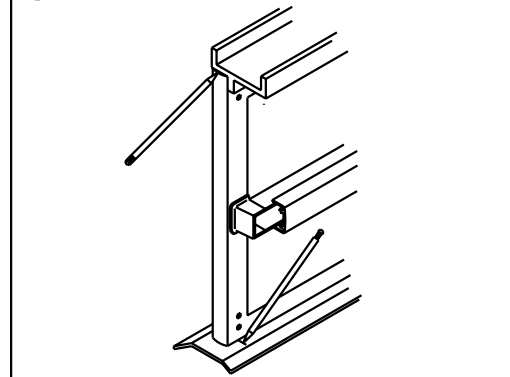


**STEP 9**  
INSTALL TOP BOLT ACTUATOR ASSEMBLY AND SECURE WITH TWO SCREWS. WITH ASSEMBLY IN LOCKED POSITION AND PUSH BAR RELEASED, END OF SQUARE BOLT SHOULD ENGAGE STOP PLATE AS SHOWN. (FOR FINE ADJUSTMENT, REMOVE ACTUATOR ASSEMBLY, ADJUST BOLT UP OR DOWN AND REINSTALL ASSEMBLY).

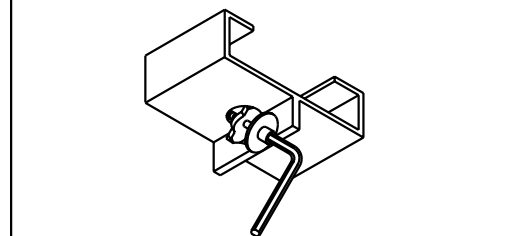


NOTE: SQUARE BOLT MUST BE FLUSH WITH TOP OF STOP PLATE.

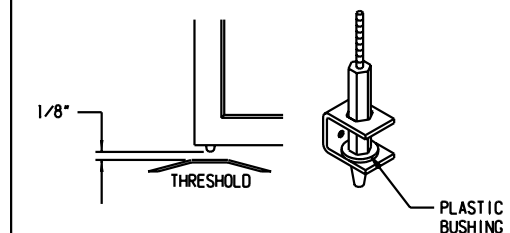
**STEP 10**  
INSTALL DOOR IN FRAME. MARK BACKSET CENTERLINE ON HEADER AND THRESHOLD. ALSO MARK WHERE FACE OF CLOSED DOOR RESTS. APPLY CLEAR TEMPLATES (H) AND (F) AND DRILL STRIKE HOLES.



**STEP 11**  
POSITION STRIKE PLATE ASSEMBLY ON HEADER. THEN, TIGHTEN SECURELY WITH HEX WRENCH.



**STEP 12**  
(1) HOLD DOOR OPEN.  
(2) DEPRESS AND RELEASE PUSH BAR.  
(3) ADJUST BOTTOM BOLT SO IT CLEARS THRESHOLD BY 1/8" AS DOOR CLOSES.  
(4) INSTALL BOTTOM GUIDE AND SECURE WITH TWO SCREWS.



**STEP 13**  
INSTALL PUSH BAR END CAPS  
SMALL "PHILLIPS"  
10-32 SELF-TAPPING SCREW